

Product datasheet for **TA373956S**

BCAS2 Rabbit Polyclonal Antibody

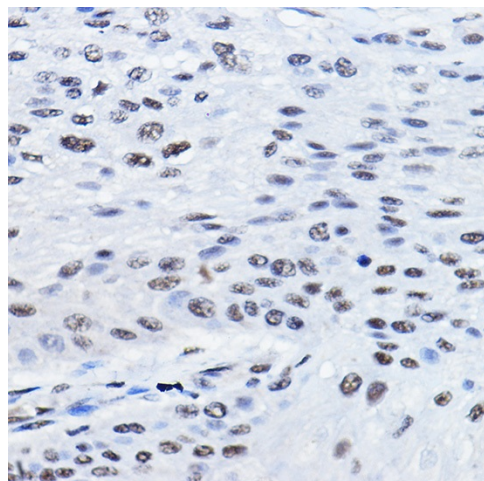
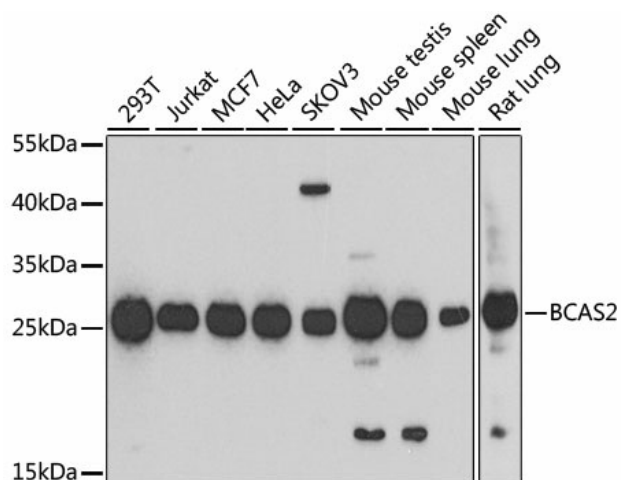
Product data:

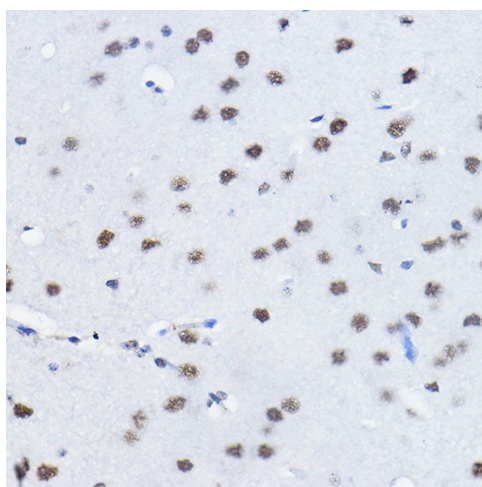
Product Type:	Primary Antibodies
Applications:	ELISA, ICC/IF, IHC, WB
Recommended Dilution:	WB, 1:500 - 1:2000 IHC-P, 1:50 - 1:200 IF/ICC, 1:50 - 1:200 ELISA, Recommended starting concentration is 1 µg/mL. Please optimize the concentration based on your specific assay requirements.
Reactivity:	Human, Mouse, Rat
Modifications:	Unmodified
Host:	Rabbit
Isotype:	IgG
Clonality:	Polyclonal
Formulation:	Buffer: PBS with 0.02% sodium azide, 50% glycerol, pH 7.3.
Concentration:	lot specific
Purification:	Affinity purification
Conjugation:	Unconjugated
Storage:	Store at -20°C. Avoid freeze / thaw cycles.
Stability:	Shelf life: one year from despatch.
Predicted Protein Size:	26kDa
Gene Name:	breast carcinoma amplified sequence 2
Database Link:	Entrez Gene 10286 Human Q75934
Background:	Involved in mRNA splicing, via spliceosome. Located in centrosome and nuclear speck. Part of U2-type catalytic step 2 spliceosome. Colocalizes with DNA replication factor A complex. Implicated in breast cancer.
Synonyms:	DAM1



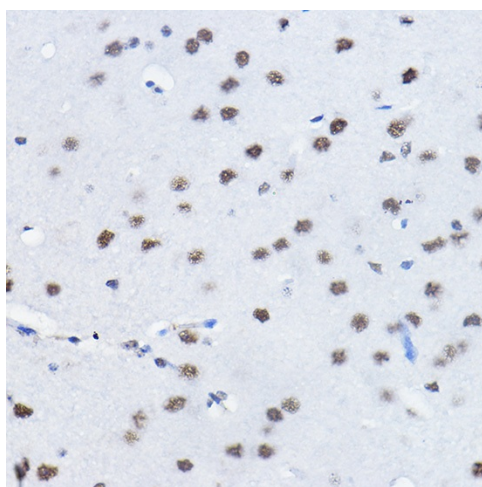
[View online »](#)

Product images:

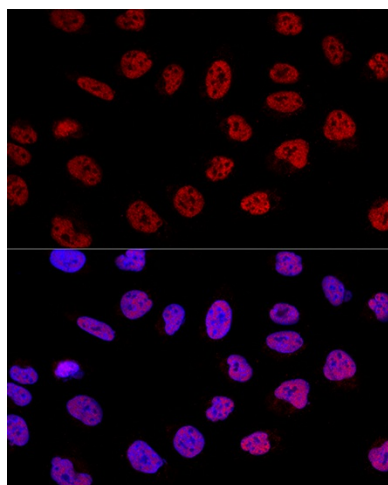




Immunohistochemistry analysis of paraffin-embedded Human esophageal cancer using BCAS2 Rabbit pAb ([TA373956]) at dilution of 1:100 (40x lens). High pressure antigen retrieval performed with 0.01M Citrate Bufferr (pH 6.0) prior to IHC staining.



Immunohistochemistry analysis of paraffin-embedded Mouse brain using BCAS2 Rabbit pAb ([TA373956]) at dilution of 1:100 (40x lens). High pressure antigen retrieval performed with 0.01M Citrate Bufferr (pH 6.0) prior to IHC staining.



Confocal immunofluorescence analysis of U2OS cells using BCAS2 Rabbit pAb ([TA373956]) at dilution of 1:100. Blue: DAPI for nuclear staining.