

Product datasheet for **TA373953S**

BCAR1 Rabbit Polyclonal Antibody

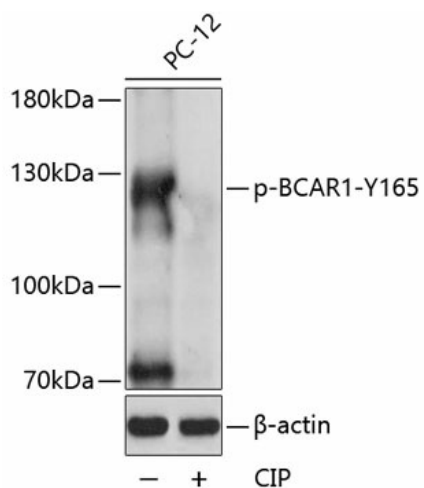
Product data:

Product Type:	Primary Antibodies
Applications:	WB
Recommended Dilution:	WB,1:500 - 1:2000
Reactivity:	Human, Mouse, Rat
Modifications:	Phospho Y165
Host:	Rabbit
Isotype:	IgG
Clonality:	Polyclonal
Immunogen:	A phospho specific peptide corresponding to residues surrounding Y165 of human BCAR1
Formulation:	Buffer: PBS with 0.02% sodium azide,50% glycerol,pH7.3.
Concentration:	lot specific
Purification:	Affinity purification
Conjugation:	Unconjugated
Storage:	Store at -20°C. Avoid freeze / thaw cycles.
Stability:	Shelf life: one year from despatch.
Predicted Protein Size:	77kDa/93kDa/95kDa/97kDa
Gene Name:	BCAR1, Cas family scaffolding protein
Database Link:	Entrez Gene 9564 Human P56945
Background:	BCAR1, or CAS, is an Src (MIM 190090) family kinase substrate involved in various cellular events, including migration, survival, transformation, and invasion (Sawada et al., 2006 [PubMed 17129785]).[supplied by OMIM, May 2009]
Synonyms:	CAS; CAS1; CASS1; CRKAS; FLJ12176; FLJ45059; P130Cas



[View online »](#)

Product images:



Western blot analysis of extracts of PC-12 cells, using Phospho-BCAR1-Y165 antibody ([TA373953]) at 1:1000 dilution. PC-12 cell lysate were treated by CIP (20ul CIP for each 400ul cell lysate) at 37°C for 1 hour . |Secondary antibody: HRP Goat Anti-Rabbit IgG (H+L) at 1:10000 dilution. |Lysates/proteins: 25ug per lane. |Blocking buffer: 3% BSA. |Detection: ECL Basic Kit . |Exposure time: 90s.