

## Product datasheet for **TA373941S**

### BAZ2A Rabbit Polyclonal Antibody

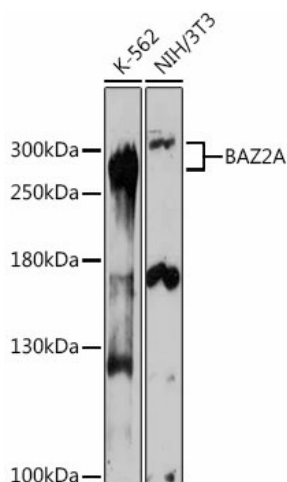
#### Product data:

Product Type:	Primary Antibodies
Applications:	ELISA, ICC/IF, IHC, WB
Recommended Dilution:	WB, 1:500 - 1:2000 IHC-P, 1:50 - 1:100 IF/ICC, 1:50 - 1:200 ELISA, Recommended starting concentration is 1 µg/mL. Please optimize the concentration based on your specific assay requirements.
Reactivity:	Human, Mouse, Rat
Modifications:	Unmodified
Host:	Rabbit
Isotype:	IgG
Clonality:	Polyclonal
Formulation:	Buffer: PBS with 0.02% sodium azide, 50% glycerol, pH7.3.
Concentration:	lot specific
Purification:	Affinity purification
Conjugation:	Unconjugated
Storage:	Store at -20°C. Avoid freeze / thaw cycles.
Stability:	Shelf life: one year from despatch.
Predicted Protein Size:	211kDa
Gene Name:	bromodomain adjacent to zinc finger domain 2A
Database Link:	<a href="#">Entrez Gene 11176 Human</a> <a href="#">Q9UIF9</a>
Background:	Enables histone binding activity. Contributes to RNA polymerase I core promoter sequence-specific DNA binding activity. Predicted to be involved in DNA methylation; histone deacetylation; and negative regulation of macromolecule metabolic process. Predicted to act upstream of or within chromatin organization and histone modification. Located in cytosol and nuclear speck.
Synonyms:	DKFZp781B109; FLJ13768; FLJ13780; FLJ45876; hWALp3; KIAA0314; TIP5; WALp3



[View online »](#)

## Product images:



Western blot analysis of various lysates using BAZ2A Rabbit pAb ([TA373941]) at 1:1000 dilution.

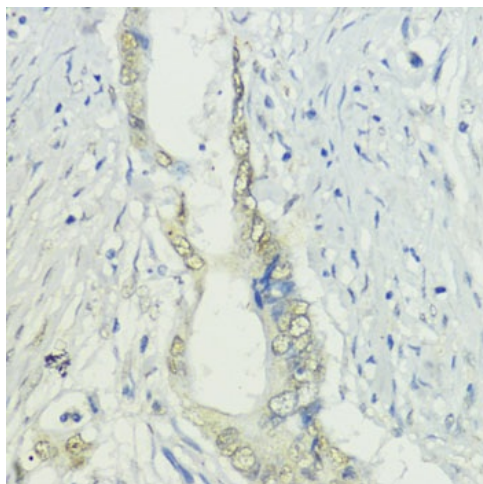
Secondary antibody: HRP-conjugated Goat anti-Rabbit IgG (H+L) (AS014) at 1:10000 dilution.

Lysates/proteins: 25µg per lane.

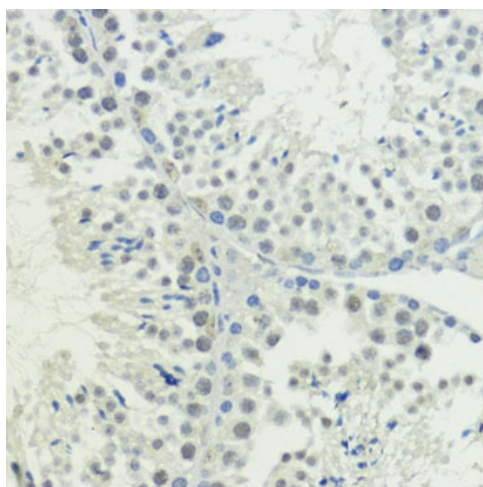
Blocking buffer: 3% nonfat dry milk in TBST.

Detection: ECL Basic Kit (RM00020).

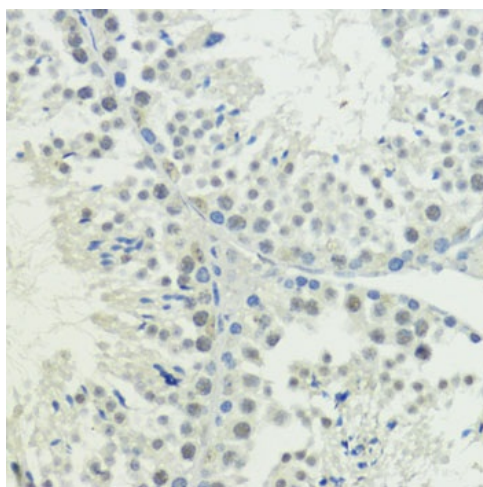
Exposure time: 180s.



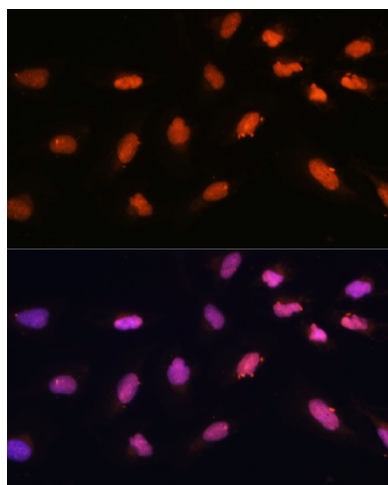
Immunohistochemistry analysis of paraffin-embedded Human mammary cancer using BAZ2A Rabbit pAb ([TA373941]) at dilution of 1:200 (40x lens). Microwave antigen retrieval performed with 0.01M PBS Buffer (pH 7.2) prior to IHC staining.



Immunohistochemistry analysis of paraffin-embedded Human colon carcinoma using BAZ2A Rabbit pAb ([TA373941]) at dilution of 1:200 (40x lens). Microwave antigen retrieval performed with 0.01M PBS Buffer (pH 7.2) prior to IHC staining.



Immunohistochemistry analysis of paraffin-embedded Mouse testis using BAZ2A Rabbit pAb ([TA373941]) at dilution of 1:200 (40x lens). Microwave antigen retrieval performed with 0.01M PBS Buffer (pH 7.2) prior to IHC staining.



Immunofluorescence analysis of U-2 OS cells using BAZ2A Rabbit pAb ([TA373941]) at dilution of 1:100. Secondary antibody: Cy3-conjugated Goat anti-Rabbit IgG (H+L) (AS007) at 1:500 dilution. Blue: DAPI for nuclear staining.