

## Product datasheet for **TA373937S**

### BAZ1A Rabbit Polyclonal Antibody

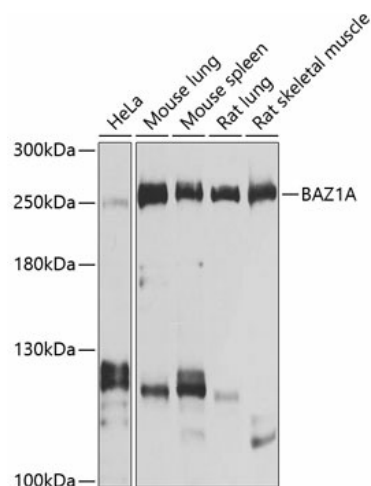
#### Product data:

Product Type:	Primary Antibodies
Applications:	ELISA, WB
Recommended Dilution:	WB, 1:500 - 1:2000 ELISA, Recommended starting concentration is 1 µg/mL. Please optimize the concentration based on your specific assay requirements.
Reactivity:	Human, Mouse, Rat
Modifications:	Unmodified
Host:	Rabbit
Isotype:	IgG
Clonality:	Polyclonal
Formulation:	Buffer: PBS with 0.02% sodium azide, 50% glycerol, pH 7.3.
Concentration:	lot specific
Purification:	Affinity purification
Conjugation:	Unconjugated
Storage:	Store at -20°C. Avoid freeze / thaw cycles.
Stability:	Shelf life: one year from despatch.
Predicted Protein Size:	179kDa
Gene Name:	bromodomain adjacent to zinc finger domain 1A
Database Link:	<a href="#">Entrez Gene 11177 Human</a> <a href="#">Q9NRL2</a>
Background:	The BAZ1A gene encodes the accessory subunit of the ATP-dependent chromatin assembly factor (ACF), a member of the ISWI ('imitation switch') family of chromatin remodeling complexes (summarized by Racki et al., 2009 [PubMed 20033039]).
Synonyms:	ACF1; DKFZp586E0518; FLJ14383; hACF1; hWALp1; OTTHUMP00000178813; WALp1; WCRF180



[View online »](#)

## Product images:



Western blot analysis of various lysates using BAZ1A Rabbit pAb (TA373937) at 1:1000 dilution.

Secondary antibody: HRP-conjugated Goat anti-Rabbit IgG (H+L) (AS014) at 1:10000 dilution.

Lysates/proteins: 25µg per lane.

Blocking buffer: 3% nonfat dry milk in TBST.

Detection: ECL Basic Kit (RM00020).

Exposure time: 1s.