

## Product datasheet for **TA373937**

### BAZ1A Rabbit Polyclonal Antibody

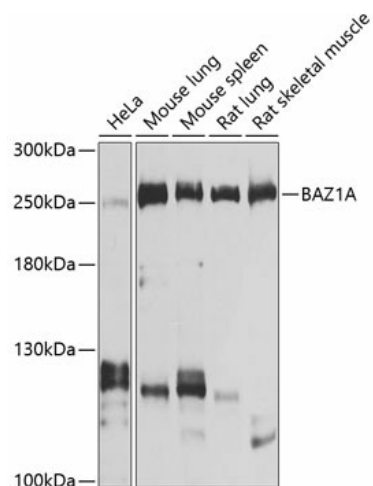
#### Product data:

Product Type:	Primary Antibodies
Applications:	WB
Recommended Dilution:	WB,1:500 - 1:2000
Reactivity:	Human, Mouse, Rat
Modifications:	Unmodified
Host:	Rabbit
Isotype:	IgG
Clonality:	Polyclonal
Immunogen:	Recombinant fusion protein containing a sequence corresponding to amino acids 1347-1556 of human BAZ1A (NP_038476.2).
Formulation:	Buffer: PBS with 0.02% sodium azide,50% glycerol,pH7.3.
Concentration:	lot specific
Purification:	Affinity purification
Conjugation:	Unconjugated
Storage:	Store at -20°C. Avoid freeze / thaw cycles.
Stability:	Shelf life: one year from despatch.
Predicted Protein Size:	175kDa/178kDa
Gene Name:	bromodomain adjacent to zinc finger domain 1A
Database Link:	<a href="#">Entrez Gene 11177 Human Q9NRL2</a>
Background:	The BAZ1A gene encodes the accessory subunit of the ATP-dependent chromatin assembly factor (ACF), a member of the ISWI ('imitation switch') family of chromatin remodeling complexes.
Synonyms:	ACF1; DKFZp586E0518; FLJ14383; hACF1; hWALp1; OTTHUMP00000178813; WALp1; WCRF180



[View online »](#)

## Product images:



Western blot analysis of extracts of various cell lines, using BAZ1A antibody (TA373937) at 1:1000 dilution. | Secondary antibody: HRP Goat Anti-Rabbit IgG (H+L) at 1:10000 dilution. | Lysates/proteins: 25ug per lane. | Blocking buffer: 3% nonfat dry milk in TBST. | Detection: ECL Basic Kit . | Exposure time: 1s.