

## Product datasheet for **TA373922**

### Bak (BAK1) Rabbit Polyclonal Antibody

#### Product data:

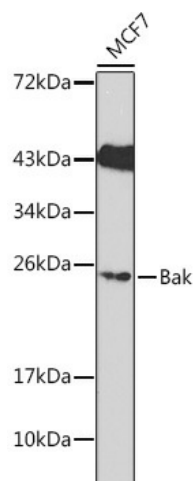
|                         |   |
|-------------------------|---|
| Product Type:           | Primary Antibodies  |
| Applications:           | IF, WB  |
| Recommended Dilution:   | WB,1:500 - 1:2000<br>IF,1:50 - 1:100  |
| Reactivity:             | Human, Mouse, Rat   |
| Modifications:          | Unmodified  |
| Host:                   | Rabbit  |
| Isotype:                | IgG   |
| Clonality:              | Polyclonal  |
| Immunogen:              | A synthetic peptide corresponding to a sequence within amino acids 62-112 of human Bak (NP_001179.1).   |
| Formulation:            | Buffer: PBS with 0.02% sodium azide,50% glycerol,pH7.3.   |
| Concentration:          | lot specific  |
| Purification:           | Affinity purification   |
| Conjugation:            | Unconjugated  |
| Storage:                | Store at -20°C. Avoid freeze / thaw cycles.   |
| Stability:              | Shelf life: one year from despatch.   |
| Predicted Protein Size: | 16kDa/23kDa   |
| Gene Name:              | BCL2 antagonist/killer 1  |
| Database Link:          | <a href="#">Entrez Gene 578 Human Q16611</a>  |
| Background:             | The protein encoded by this gene belongs to the BCL2 protein family. BCL2 family members form oligomers or heterodimers and act as anti- or pro-apoptotic regulators that are involved in a wide variety of cellular activities. This protein localizes to mitochondria, and functions to induce apoptosis. It interacts with and accelerates the opening of the mitochondrial voltage-dependent anion channel, which leads to a loss in membrane potential and the release of cytochrome c. This protein also interacts with the tumor suppressor P53 after exposure to cell stress. |



[View online »](#)

Synonyms: BAK; BAK-LIKE; Bcl2-L-7; BCL2L7; CDN1; MGC3887; MGC117255

### Product images:



Western blot analysis of extracts of MCF7 cells, using Bak Antibody (TA373922). | Secondary antibody: HRP Goat Anti-Rabbit IgG (H+L) at 1:10000 dilution. | Lysates/proteins: 25ug per lane. | Blocking buffer: 3% nonfat dry milk in TBST.