

## Product datasheet for **TA373880S**

### AXL Rabbit Polyclonal Antibody

#### Product data:

Product Type:	Primary Antibodies
Applications:	ICC/IF, IHC, IP, WB
Recommended Dilution:	WB,1:500 - 1:1000 IHC,1:50 - 1:200 IF,1:50 - 1:200 IP,1:50 - 1:100
Reactivity:	Human
Modifications:	Unmodified
Host:	Rabbit
Isotype:	IgG
Clonality:	Polyclonal
Immunogen:	A synthetic peptide of human AXL
Formulation:	Buffer: PBS with 0.02% sodium azide, 50% glycerol, pH7.3.
Concentration:	lot specific
Purification:	Affinity purification
Conjugation:	Unconjugated
Storage:	Store at -20°C. Avoid freeze / thaw cycles. Avoid freeze / thaw cycles.   Buffer: PBS with 0.02% sodium azide, 50% glycerol, pH7.3.
Stability:	Shelf life: one year from despatch.
Predicted Protein Size:	97kDa/98kDa
Gene Name:	AXL receptor tyrosine kinase
Database Link:	<a href="#">Entrez Gene 558 Human P30530</a>



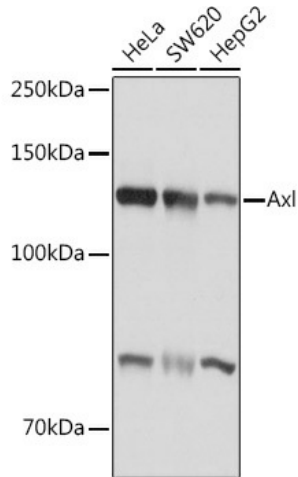
[View online »](#)

**Background:**

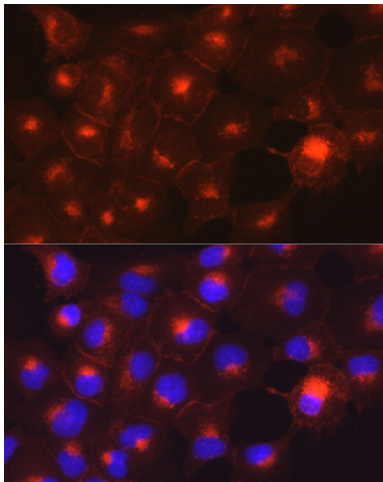
The protein encoded by this gene is a member of the Tyro3-Axl-Mer (TAM) receptor tyrosine kinase subfamily. The encoded protein possesses an extracellular domain which is composed of two immunoglobulin-like motifs at the N-terminal, followed by two fibronectin type-III motifs. It transduces signals from the extracellular matrix into the cytoplasm by binding to the vitamin K-dependent protein growth arrest-specific 6 (Gas6). This gene may be involved in several cellular functions including growth, migration, aggregation and anti-inflammation in multiple cell types. Alternative splicing results in multiple transcript variants of this gene.

**Synonyms:**

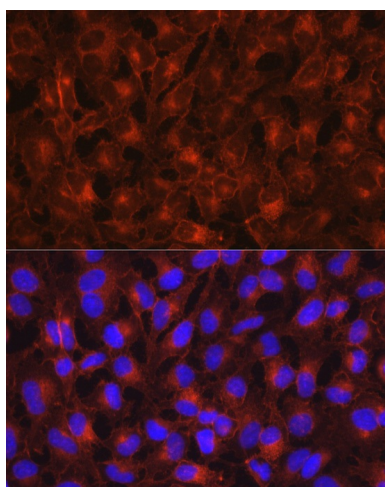
JTK11; UFO

**Product images:**

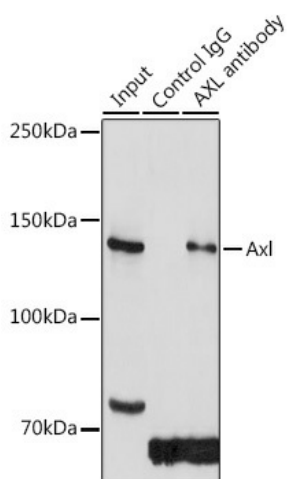
Western blot analysis of extracts of various cell lines, using Axl antibody ([TA373880]) at 1:1000 dilution. | Secondary antibody: HRP Goat Anti-Rabbit IgG (H+L) at 1:10000 dilution. | Lysates/proteins: 25ug per lane. | Blocking buffer: 3% nonfat dry milk in TBST. | Detection: ECL Basic Kit . | Exposure time: 1s.



Immunofluorescence analysis of DU145 cells using Axl Rabbit pAb ([TA373880]) at dilution of 1:200 (40x lens). Blue: DAPI for nuclear staining.



Immunofluorescence analysis of HeLa cells using Axl Rabbit pAb ([TA373880]) at dilution of 1:200 (40x lens). Blue: DAPI for nuclear staining.



Immunoprecipitation analysis of 300ug extracts of HeLa cells using 3ug Axl antibody ([TA373880]). Western blot was performed from the immunoprecipitate using AXL antibody ([TA373880]) at a dilution of 1:1000.