

## Product datasheet for **TA373880**

### AXL Rabbit Polyclonal Antibody

#### Product data:

|                         |   |
|-------------------------|---|
| Product Type:           | Primary Antibodies  |
| Applications:           | ICC/IF, IHC, IP, WB   |
| Recommended Dilution:   | WB,1:500 - 1:1000<br>IHC,1:50 - 1:200<br>IF,1:50 - 1:200<br>IP,1:50 - 1:100   |
| Reactivity:             | Human   |
| Modifications:          | Unmodified  |
| Host:                   | Rabbit  |
| Isotype:                | IgG   |
| Clonality:              | Polyclonal  |
| Immunogen:              | A synthetic peptide of human AXL  |
| Formulation:            | Buffer: PBS with 0.02% sodium azide, 50% glycerol, pH7.3.   |
| Concentration:          | lot specific  |
| Purification:           | Affinity purification   |
| Conjugation:            | Unconjugated  |
| Storage:                | Store at -20°C. Avoid freeze / thaw cycles. Avoid freeze / thaw cycles.   Buffer: PBS with 0.02% sodium azide, 50% glycerol, pH7.3. |
| Stability:              | Shelf life: one year from despatch.   |
| Predicted Protein Size: | 97kDa/98kDa   |
| Gene Name:              | AXL receptor tyrosine kinase  |
| Database Link:          | <a href="#">Entrez Gene 558 Human P30530</a>  |



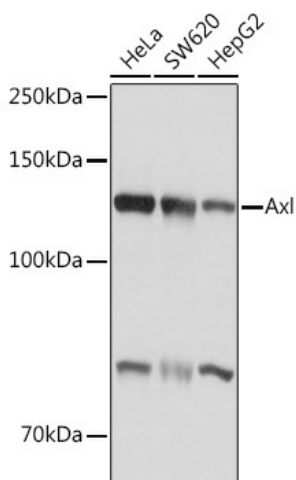
[View online »](#)

**Background:**

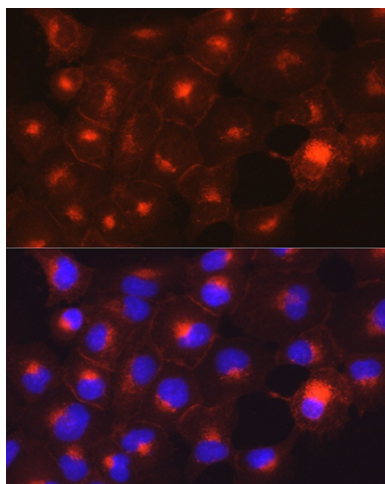
The protein encoded by this gene is a member of the Tyro3-Axl-Mer (TAM) receptor tyrosine kinase subfamily. The encoded protein possesses an extracellular domain which is composed of two immunoglobulin-like motifs at the N-terminal, followed by two fibronectin type-III motifs. It transduces signals from the extracellular matrix into the cytoplasm by binding to the vitamin K-dependent protein growth arrest-specific 6 (Gas6). This gene may be involved in several cellular functions including growth, migration, aggregation and anti-inflammation in multiple cell types. Alternative splicing results in multiple transcript variants of this gene.

**Synonyms:**

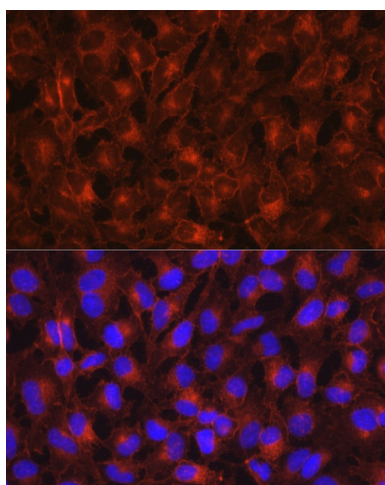
JTK11; UFO

**Product images:**

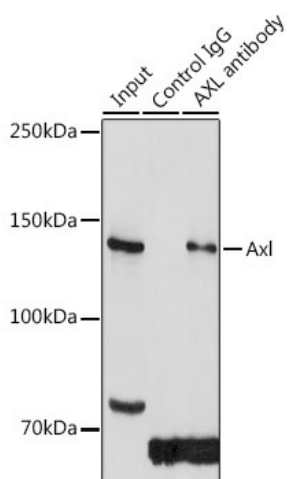
Western blot analysis of extracts of various cell lines, using Axl antibody (TA373880) at 1:1000 dilution. | Secondary antibody: HRP Goat Anti-Rabbit IgG (H+L) at 1:10000 dilution. | Lysates/proteins: 25ug per lane. | Blocking buffer: 3% nonfat dry milk in TBST. | Detection: ECL Basic Kit . | Exposure time: 1s.



Immunofluorescence analysis of DU145 cells using Axl Rabbit pAb (TA373880) at dilution of 1:200 (40x lens). Blue: DAPI for nuclear staining.



Immunofluorescence analysis of HeLa cells using Axl Rabbit pAb (TA373880) at dilution of 1:200 (40x lens). Blue: DAPI for nuclear staining.



Immunoprecipitation analysis of 300ug extracts of HeLa cells using 3ug Axl antibody (TA373880). Western blot was performed from the immunoprecipitate using AXL antibody (TA373880) at a dilution of 1:1000.