

Product datasheet for **TA373874S**

AVPI1 Rabbit Polyclonal Antibody

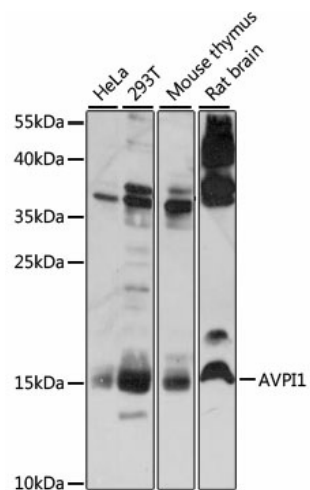
Product data:

Product Type:	Primary Antibodies
Applications:	ELISA, WB
Recommended Dilution:	WB,1:200 - 1:2000 ELISA,Recommended starting concentration is 1 µg/mL. Please optimize the concentration based on your specific assay requirements.
Reactivity:	Human, Mouse, Rat
Modifications:	Unmodified
Host:	Rabbit
Isotype:	IgG
Clonality:	Polyclonal
Formulation:	Buffer: PBS with 0.02% sodium azide,50% glycerol,pH7.3.
Concentration:	lot specific
Purification:	Affinity purification
Conjugation:	Unconjugated
Storage:	Store at -20°C. Avoid freeze / thaw cycles.
Stability:	Shelf life: one year from despatch.
Predicted Protein Size:	17kDa
Gene Name:	arginine vasopressin induced 1
Database Link:	Entrez Gene 60370 Human Q5T686
Background:	Predicted to act upstream of or within positive regulation of MAPK cascade.
Synonyms:	PP5395; RP11-548K23.7; VIP32; VIT32



[View online »](#)

Product images:



Western blot analysis of various lysates using AVPI1 Rabbit pAb ([TA373874]) at 1:1000 dilution. Secondary antibody: HRP-conjugated Goat anti-Rabbit IgG (H+L) (AS014) at 1:10000 dilution. Lysates/proteins: 25µg per lane. Blocking buffer: 3% nonfat dry milk in TBST. Detection: ECL Basic Kit (RM00020). Exposure time: 30s.