

## Product datasheet for **TA373872**

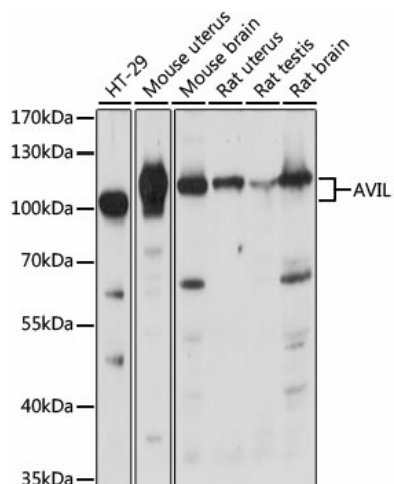
### Advillin (AVIL) Rabbit Polyclonal Antibody

#### Product data:

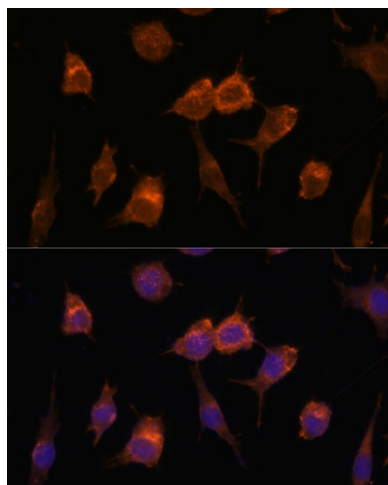
Product Type:	Primary Antibodies
Applications:	ICC/IF, WB
Recommended Dilution:	WB, 1:500 - 1:2000 IF, 1:50 - 1:200
Reactivity:	Human, Mouse, Rat
Modifications:	Unmodified
Host:	Rabbit
Isotype:	IgG
Clonality:	Polyclonal
Immunogen:	Recombinant fusion protein containing a sequence corresponding to amino acids 470-819 of human AVIL (NP_006567.3).
Formulation:	Buffer: PBS with 0.02% sodium azide, 50% glycerol, pH 7.3.
Concentration:	lot specific
Purification:	Affinity purification
Conjugation:	Unconjugated
Storage:	Store at -20°C. Avoid freeze / thaw cycles.
Stability:	Shelf life: one year from despatch.
Predicted Protein Size:	91kDa/92kDa
Gene Name:	advillin
Database Link:	<a href="#">Entrez Gene 10677 Human O75366</a>
Background:	The protein encoded by this gene is a member of the gelsolin/villin family of actin regulatory proteins. This protein has structural similarity to villin. It binds actin and may play a role in the development of neuronal cells that form ganglia.
Synonyms:	ADVIL; advillin; DKFZp779O1812; DOC6; FLJ12386; MGC133244; p92



[View online »](#)

**Product images:**


Western blot analysis of extracts of various cell lines, using AVIL antibody (TA373872) at 1:1000 dilution. | Secondary antibody: HRP Goat Anti-Rabbit IgG (H+L) at 1:10000 dilution. | Lysates/proteins: 25ug per lane. | Blocking buffer: 3% nonfat dry milk in TBST. | Detection: ECL Basic Kit . | Exposure time: 30s.



Immunofluorescence analysis of L929 cells using AVIL antibody (TA373872) at dilution of 1:100. Blue: DAPI for nuclear staining.