

## Product datasheet for **TA373870S**

### AUTS2 Rabbit Polyclonal Antibody

#### Product data:

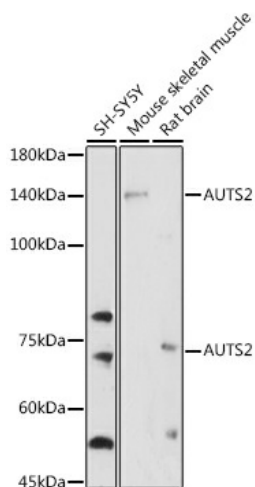
|                         |  |
|-------------------------|--|
| Product Type:           | Primary Antibodies   |
| Applications:           | ICC/IF, WB   |
| Recommended Dilution:   | WB,1:500 - 1:2000<br>IF,1:50 - 1:200   |
| Reactivity:             | Human, Mouse, Rat  |
| Modifications:          | Unmodified   |
| Host:                   | Rabbit   |
| Isotype:                | IgG  |
| Clonality:              | Polyclonal   |
| Immunogen:              | Recombinant fusion protein containing a sequence corresponding to amino acids 550-770 of human AUTS2 (NP_001120703).   |
| Formulation:            | Buffer: PBS with 0.02% sodium azide,50% glycerol,pH7.3.  |
| Concentration:          | lot specific   |
| Purification:           | Affinity purification  |
| Conjugation:            | Unconjugated   |
| Storage:                | Store at -20°C. Avoid freeze / thaw cycles.  |
| Stability:              | Shelf life: one year from despatch.  |
| Predicted Protein Size: | 138kDa   |
| Gene Name:              | autism susceptibility candidate 2  |
| Database Link:          | <a href="#">Entrez Gene 26053 Human Q8WXX7</a>   |
| Background:             | This gene has been implicated in neurodevelopment and as a candidate gene for numerous neurological disorders, including autism spectrum disorders, intellectual disability, and developmental delay. Mutations in this gene have also been associated with non-neurological disorders, such as acute lymphoblastic leukemia, aging of the skin, early-onset androgenetic alopecia, and certain cancers. Alternative splicing results in multiple transcript variants encoding different isoforms. |



[View online »](#)

Synonyms: FBRSL2; KIAA0442; MGC13140

### Product images:



Western blot analysis of extracts of various cell lines, using AUTS2 antibody ([TA373870]) at 1:1000 dilution. | Secondary antibody: HRP Goat Anti-Rabbit IgG (H+L) at 1:10000 dilution. | Lysates/proteins: 25ug per lane. | Blocking buffer: 3% nonfat dry milk in TBST. | Detection: ECL Enhanced Kit. | Exposure time: 300s.