

Product datasheet for **TA373858S**

ATRNL1 Rabbit Polyclonal Antibody

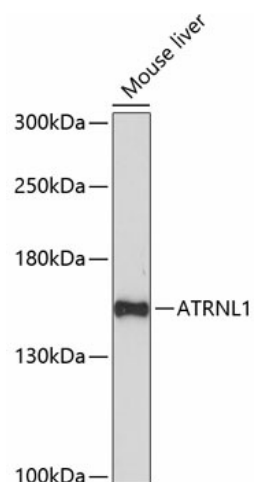
Product data:

Product Type:	Primary Antibodies
Applications:	ELISA, WB
Recommended Dilution:	WB, 1:500 - 1:2000 ELISA, Recommended starting concentration is 1 µg/mL. Please optimize the concentration based on your specific assay requirements.
Reactivity:	Human, Mouse
Modifications:	Unmodified
Host:	Rabbit
Isotype:	IgG
Clonality:	Polyclonal
Formulation:	Buffer: PBS with 0.02% sodium azide, 50% glycerol, pH 7.3.
Concentration:	lot specific
Purification:	Affinity purification
Conjugation:	Unconjugated
Storage:	Store at -20°C. Avoid freeze / thaw cycles.
Stability:	Shelf life: one year from despatch.
Predicted Protein Size:	153kDa
Gene Name:	attractin like 1
Database Link:	Entrez Gene 26033 Human Q5VV63
Background:	Predicted to enable carbohydrate binding activity. Predicted to be involved in several processes, including animal organ morphogenesis; cell migration; and substrate adhesion-dependent cell spreading. Predicted to act upstream of or within G protein-coupled receptor signaling pathway. Predicted to be located in membrane. Predicted to be integral component of membrane. Predicted to be active in basement membrane.
Synonyms:	ALP; bA338L11.1; bA454H24.1; FLJ45344; KIAA0534



[View online »](#)

Product images:



Western blot analysis of lysates from mouse liver