

Product datasheet for **TA373856**

ATRIP Rabbit Polyclonal Antibody

Product data:

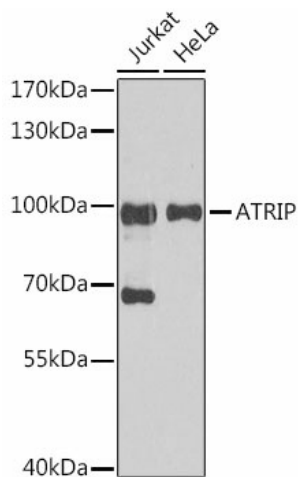
Product Type:	Primary Antibodies
Applications:	ICC/IF, IP, WB
Recommended Dilution:	WB,1:500 - 1:2000 IF,1:50 - 1:200 IP,1:20 - 1:50
Reactivity:	Human
Modifications:	Unmodified
Host:	Rabbit
Isotype:	IgG
Clonality:	Polyclonal
Immunogen:	Recombinant fusion protein containing a sequence corresponding to amino acids 1-260 of human ATRIP (NP_569055.1).
Formulation:	Buffer: PBS with 0.02% sodium azide,50% glycerol,pH7.3.
Concentration:	lot specific
Purification:	Affinity purification
Conjugation:	Unconjugated
Storage:	Store at -20°C. Avoid freeze / thaw cycles.
Stability:	Shelf life: one year from despatch.
Predicted Protein Size:	72kDa/76kDa/83kDa/85kDa
Gene Name:	ATR interacting protein
Database Link:	Entrez Gene 84126 Human Q8WXE1
Background:	This gene encodes an essential component of the DNA damage checkpoint. The encoded protein binds to single-stranded DNA coated with replication protein A. The protein also interacts with the ataxia telangiectasia and Rad3 related protein kinase, resulting in its accumulation at intranuclear foci induced by DNA damage. Multiple transcript variants encoding different isoforms have been found for this gene.



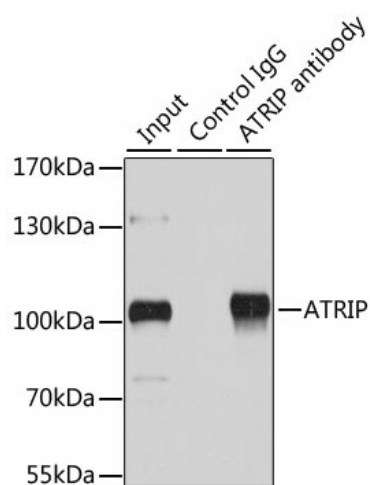
[View online »](#)

Synonyms: AGS1; DKFZp762J2115; FLJ12343; MGC20625; MGC21482; MGC26740

Product images:



Western blot analysis of extracts of various cell lines, using ATRIP antibody (TA373856) at 1:1000 dilution. | Secondary antibody: HRP Goat Anti-Rabbit IgG (H+L) at 1:10000 dilution. | Lysates/proteins: 25ug per lane. | Blocking buffer: 3% nonfat dry milk in TBST. | Detection: ECL Basic Kit. | Exposure time: 30s.



Immunoprecipitation analysis of 200ug extracts of HeLa cells using 1ug ATRIP antibody (TA373856). Western blot was performed from the immunoprecipitate using ATRIP antibody (TA373856) at a dilution of 1:1000.