

Product datasheet for **TA373851S**

ATPase Inhibitory Factor 1 (ATPIF1) Rabbit Polyclonal Antibody

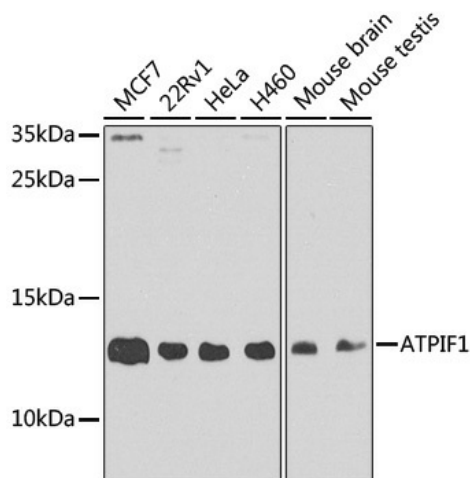
Product data:

Product Type:	Primary Antibodies
Applications:	ICC/IF, IP, WB
Recommended Dilution:	WB, 1:500 - 1:2000 IF, 1:50 - 1:100
Reactivity:	Human, Mouse
Modifications:	Unmodified
Host:	Rabbit
Isotype:	IgG
Clonality:	Polyclonal
Immunogen:	Recombinant fusion protein containing a sequence corresponding to amino acids 26-106 of human ATPIF1 (NP_057395.1).
Formulation:	Buffer: PBS with 0.02% sodium azide, 50% glycerol, pH 7.3.
Concentration:	lot specific
Purification:	Affinity purification
Conjugation:	Unconjugated
Storage:	Store at -20°C. Avoid freeze / thaw cycles.
Stability:	Shelf life: one year from despatch.
Predicted Protein Size:	6kDa/7kDa/12kDa
Gene Name:	ATPase inhibitory factor 1
Database Link:	Entrez Gene 93974 Human Q9UII2
Background:	This gene encodes a mitochondrial ATPase inhibitor. Alternative splicing occurs at this locus and three transcript variants encoding distinct isoforms have been identified.
Synonyms:	ATPI; ATPIP; IP; MGC1167; MGC8898

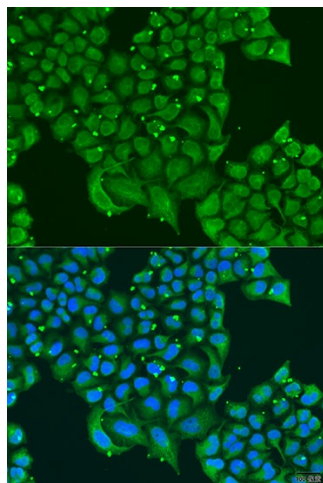


[View online »](#)

Product images:



Western blot analysis of extracts of various cell lines, using ATPIF1 antibody ([TA373851]) at 1:1000 dilution. | Secondary antibody: HRP Goat Anti-Rabbit IgG (H+L) at 1:10000 dilution. | Lysates/proteins: 25ug per lane. | Blocking buffer: 3% nonfat dry milk in TBST. | Detection: ECL Basic Kit . | Exposure time: 90s.



Immunofluorescence analysis of U2OS cells using ATPIF1 antibody ([TA373851]) at dilution of 1:100. Blue: DAPI for nuclear staining.