

## Product datasheet for **TA373841S**

### ATP6V1B2 Rabbit Polyclonal Antibody

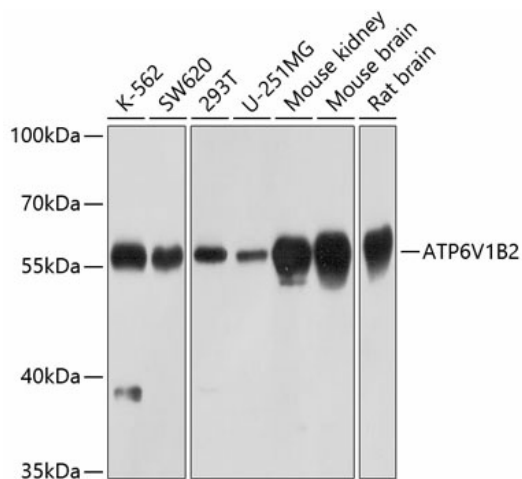
#### Product data:

|                         |  |
|-------------------------|--|
| Product Type:           | Primary Antibodies   |
| Applications:           | ELISA, WB  |
| Recommended Dilution:   | WB, 1:500 - 1:2000<br>ELISA, Recommended starting concentration is 1 µg/mL. Please optimize the concentration based on your specific assay requirements.   |
| Reactivity:             | Human, Mouse, Rat  |
| Modifications:          | Unmodified   |
| Host:                   | Rabbit   |
| Isotype:                | IgG  |
| Clonality:              | Polyclonal   |
| Formulation:            | Buffer: PBS with 0.02% sodium azide, 50% glycerol, pH 7.3.   |
| Concentration:          | lot specific   |
| Purification:           | Affinity purification  |
| Conjugation:            | Unconjugated   |
| Storage:                | Store at -20°C. Avoid freeze / thaw cycles.  |
| Stability:              | Shelf life: one year from despatch.  |
| Predicted Protein Size: | 57kDa  |
| Gene Name:              | ATPase H <sup>+</sup> transporting V1 subunit B2   |
| Database Link:          | <a href="#">Entrez Gene 526 Human P21281</a>   |
| Background:             | This gene encodes a component of vacuolar ATPase (V-ATPase), a multisubunit enzyme that mediates acidification of eukaryotic intracellular organelles. V-ATPase dependent organelle acidification is necessary for such intracellular processes as protein sorting, zymogen activation, receptor-mediated endocytosis, and synaptic vesicle proton gradient generation. V-ATPase is composed of a cytosolic V1 domain and a transmembrane V0 domain. The V1 domain consists of three A, three B, and two G subunits, as well as a C, D, E, F, and H subunit. The V1 domain contains the ATP catalytic site. The protein encoded by this gene is one of two V1 domain B subunit isoforms and is the only B isoform highly expressed in osteoclasts. |


[View online »](#)

**Synonyms:** ATP6B1B2; ATP6B2; HO57; VATB; Vma2; VPP3

**Product images:**



Western blot analysis of various lysates using ATP6V1B2 Rabbit pAb (TA373841S) at 1:1000 dilution.

Secondary antibody: HRP-conjugated Goat anti-Rabbit IgG (H+L) (AS014) at 1:10000 dilution.

Lysates/proteins: 25µg per lane.

Blocking buffer: 3% nonfat dry milk in TBST.

Detection: ECL Basic Kit (RM00020).

Exposure time: 30s.