

## Product datasheet for **TA373816S**

### ATP2B2 Rabbit Polyclonal Antibody

#### Product data:

Product Type:	Primary Antibodies
Applications:	ELISA, WB
Recommended Dilution:	WB, 1:500 - 1:1000 ELISA, Recommended starting concentration is 1 µg/mL. Please optimize the concentration based on your specific assay requirements.
Reactivity:	Human, Mouse, Rat
Modifications:	Unmodified
Host:	Rabbit
Isotype:	IgG
Clonality:	Polyclonal
Formulation:	Buffer: PBS with 0.02% sodium azide, 50% glycerol, pH 7.3.
Concentration:	lot specific
Purification:	Affinity purification
Conjugation:	Unconjugated
Storage:	Store at -20°C. Avoid freeze / thaw cycles.
Stability:	Shelf life: one year from despatch.
Predicted Protein Size:	137kDa
Gene Name:	ATPase plasma membrane Ca <sup>2+</sup> transporting 2
Database Link:	<a href="#">Entrez Gene 491 Human Q01814</a>

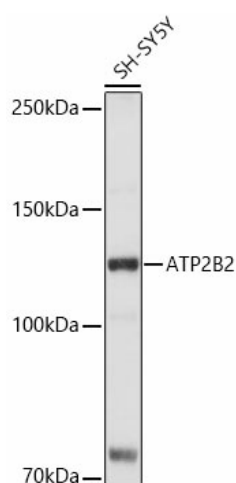
[View online »](#)

**Background:**

The protein encoded by this gene belongs to the family of P-type primary ion transport ATPases characterized by the formation of an aspartyl phosphate intermediate during the reaction cycle. These enzymes remove bivalent calcium ions from eukaryotic cells against very large concentration gradients and play a critical role in intracellular calcium homeostasis. The mammalian plasma membrane calcium ATPase isoforms are encoded by at least four separate genes and the diversity of these enzymes is further increased by alternative splicing of transcripts. The expression of different isoforms and splice variants is regulated in a developmental, tissue- and cell type-specific manner, suggesting that these pumps are functionally adapted to the physiological needs of particular cells and tissues. This gene encodes the plasma membrane calcium ATPase isoform 2. Alternatively spliced transcript variants encoding different isoforms have been identified.

**Synonyms:**

OTTHUMP00000158863; OTTHUMP00000178537; PMCA2; PMCA2a; PMCA2i

**Product images:**


Western blot analysis of lysates from SH-SY5Y cells