

## Product datasheet for **TA373800S**

### ATP12A Rabbit Polyclonal Antibody

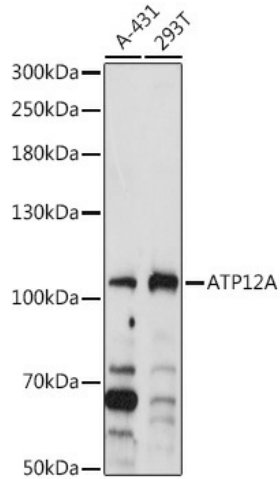
#### Product data:

Product Type:	Primary Antibodies
Applications:	WB
Recommended Dilution:	WB,1:500 - 1:2000
Reactivity:	Human
Modifications:	Unmodified
Host:	Rabbit
Isotype:	IgG
Clonality:	Polyclonal
Immunogen:	Recombinant fusion protein containing a sequence corresponding to amino acids 890-980 of human ATP12A (NP_001172014.1).
Formulation:	Buffer: PBS with 0.02% sodium azide,50% glycerol,pH7.3.
Concentration:	lot specific
Purification:	Affinity purification
Conjugation:	Unconjugated
Storage:	Store at -20°C. Avoid freeze / thaw cycles.
Stability:	Shelf life: one year from despatch.
Predicted Protein Size:	115kDa/116kDa
Gene Name:	ATPase H <sup>+</sup> /K <sup>+</sup> transporting non-gastric alpha2 subunit
Database Link:	<a href="#">Entrez Gene 479 Human P54707</a>
Background:	The protein encoded by this gene belongs to the family of P-type cation transport ATPases. This gene encodes a catalytic subunit of the ouabain-sensitive H <sup>+</sup> /K <sup>+</sup> -ATPase that catalyzes the hydrolysis of ATP coupled with the exchange of H <sup>(+)</sup> and K <sup>(+)</sup> ions across the plasma membrane. It is also responsible for potassium absorption in various tissues. Two transcript variants encoding different isoforms have been found for this gene.
Synonyms:	ATP1A1



[View online »](#)

## Product images:



Western blot analysis of extracts of various cell lines, using ATP12A antibody ([TA373800]) at 1:1000 dilution. | Secondary antibody: HRP Goat Anti-Rabbit IgG (H+L) at 1:10000 dilution. | Lysates/proteins: 25ug per lane. | Blocking buffer: 3% nonfat dry milk in TBST. | Detection: ECL Basic Kit . | Exposure time: 5s.