

## Product datasheet for **TA373799**

### ATP11C Rabbit Polyclonal Antibody

#### Product data:

Product Type:	Primary Antibodies
Applications:	WB
Recommended Dilution:	WB,1:500 - 1:2000
Reactivity:	Human, Mouse
Modifications:	Unmodified
Host:	Rabbit
Isotype:	IgG
Clonality:	Polyclonal
Immunogen:	Recombinant fusion protein containing a sequence corresponding to amino acids 430-650 of human ATP11C (NP_775965.2).
Formulation:	Buffer: PBS with 0.02% sodium azide,50% glycerol,pH7.3.
Concentration:	lot specific
Purification:	Affinity purification
Conjugation:	Unconjugated
Storage:	Store at -20°C. Avoid freeze / thaw cycles.
Stability:	Shelf life: one year from despatch.
Predicted Protein Size:	126kDa/128kDa/129kDa
Gene Name:	ATPase phospholipid transporting 11C
Database Link:	<a href="#">Entrez Gene 286410 Human Q8NB49</a>



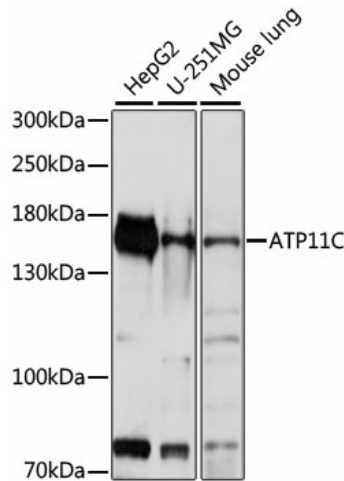
[View online »](#)

**Background:**

Catalytic component of a P4-ATPase flippase complex which catalyzes the hydrolysis of ATP coupled to the transport of aminophospholipids, phosphatidylserines (PS and phosphatidylethanolamines (PE, from the outer to the inner leaflet of the plasma membrane. Major PS-flippase in immune cell subsets. In erythrocyte plasma membrane, it is required to maintain PS in the inner leaflet preventing its exposure on the surface. This asymmetric distribution is critical for the survival of erythrocytes in circulation since externalized PS is a phagocytic signal for erythrocyte clearance by splenic macrophages. Required for B cell differentiation past the pro-B cell stage (By similarity. Seems to mediate PS flipping in pro-B cells (By similarity. May be involved in the transport of cholestatic bile acids (By similarity.

**Synonyms:**

ATPIG; ATP1Q

**Product images:**

Western blot analysis of extracts of various cell lines, using ATP11<sup>C</sup> antibody (TA373799) at 1:1000 dilution. | Secondary antibody: HRP Goat Anti-Rabbit IgG (H+L) at 1:10000 dilution. | Lysates/proteins: 25ug per lane. | Blocking buffer: 3% nonfat dry milk in TBST. | Detection: ECL Basic Kit . | Exposure time: 5s.