

Product datasheet for **TA373795S**

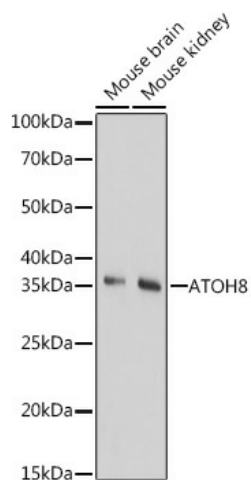
Protein atonal homolog 8 (ATOH8) Rabbit Polyclonal Antibody

Product data:

| | |
|-------------------------|--|
| Product Type: | Primary Antibodies |
| Applications: | ELISA, WB |
| Recommended Dilution: | WB, 1:500 - 1:2000 ELISA, Recommended starting concentration is 1 µg/mL. Please optimize the concentration based on your specific assay requirements. |
| Reactivity: | Mouse, Rat |
| Host: | Rabbit |
| Isotype: | IgG |
| Clonality: | Polyclonal |
| Formulation: | Buffer: PBS with 0.02% sodium azide, 50% glycerol, pH 7.3. |
| Concentration: | lot specific |
| Purification: | Affinity purification |
| Conjugation: | Unconjugated |
| Storage: | Store at -20°C. Avoid freeze / thaw cycles. |
| Stability: | Shelf life: one year from despatch. |
| Predicted Protein Size: | 35kDa |
| Gene Name: | atonal bHLH transcription factor 8 |
| Database Link: | Q96SQ7 |
| Background: | Enables DNA-binding transcription factor activity and E-box binding activity. Involved in several processes, including SMAD protein signal transduction; positive regulation of endothelial cell differentiation; and regulation of gene expression. Located in nucleoplasm. |
| Synonyms: | bHLHa21; FLJ14708; FLJ38730; HATH6 |

[View online »](#)

Product images:



Western blot analysis of various lysates using ATOH8 Rabbit pAb ([TA373795]) at 1:1000 dilution.

Secondary antibody: HRP-conjugated Goat anti-Rabbit IgG (H+L) (AS014) at 1:10000 dilution.

Lysates/proteins: 25µg per lane.

Blocking buffer: 3% nonfat dry milk in TBST.

Detection: ECL Basic Kit (RM00020).

Exposure time: 180s.