

## Product datasheet for **TA373795**

### Protein atonal homolog 8 (ATOH8) Rabbit Polyclonal Antibody

#### Product data:

Product Type:	Primary Antibodies
Applications:	WB
Recommended Dilution:	WB,1:500 - 1:2000
Reactivity:	Mouse, Rat
Host:	Rabbit
Isotype:	IgG
Clonality:	Polyclonal
Immunogen:	A synthetic peptide of human ATOH8.
Formulation:	Buffer: PBS with 0.02% sodium azide,50% glycerol,pH7.3.
Concentration:	lot specific
Purification:	Affinity purification
Conjugation:	Unconjugated
Storage:	Store at -20°C. Avoid freeze / thaw cycles.
Stability:	Shelf life: one year from despatch.
Predicted Protein Size:	35kDa
Gene Name:	atonal bHLH transcription factor 8
Database Link:	<a href="#">Q96SQ7</a>



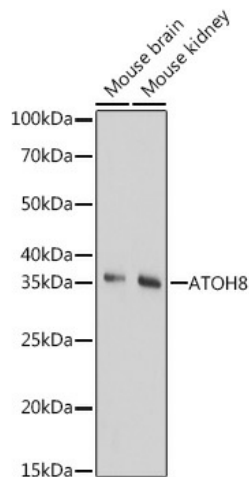
[View online »](#)

**Background:**

Transcription factor that binds a palindromic (canonical core consensus DNA sequence 5'-CANNTG- 3' known as an E-box element, possibly as a heterodimer with other bHLH proteins. Regulates endothelial cell proliferation, migration and tube-like structures formation. Modulates endothelial cell differentiation through NOS3. May be implicated in specification and differentiation of neuronal cell lineages in the brain (By similarity. May participate in kidney development and may be involved in podocyte differentiation (By similarity. During early embryonic development is involved in tissue-specific differentiation processes that are dependent on class II bHLH factors and namely modulates the differentiation program initiated by the pro-endocrine factor NEUROG3 (By similarity. During myogenesis, may play a role during the transition of myoblasts from the proliferative phase to the differentiation phase (By similarity. Positively regulates HAMP transcription in two ways, firstly by acting directly on the HAMP promoter via E-boxes binding and indirectly through increased phosphorylation of SMAD protein complex. Repress NEUROG3-dependent gene activation in a gene-specific manner through at least two mechanisms; requires only either the sequestering of a general partner such as TCF3 through heterodimerization, either also requires binding of the bHLH domain to DNA via a basic motif (By similarity.

**Synonyms:**

bHLHa21; FLJ14708; FLJ38730; HATH6

**Product images:**

Western blot analysis of extracts of various cell lines, using ATO8 Rabbit pAb (TA373795) at 1:1000 dilution. | Secondary antibody: HRP Goat Anti-Rabbit IgG (H+L) at 1:10000 dilution. | Lysates/proteins: 25ug per lane. | Blocking buffer: 3% nonfat dry milk in TBST. | Detection: ECL Basic Kit . | Exposure time: 180s.