

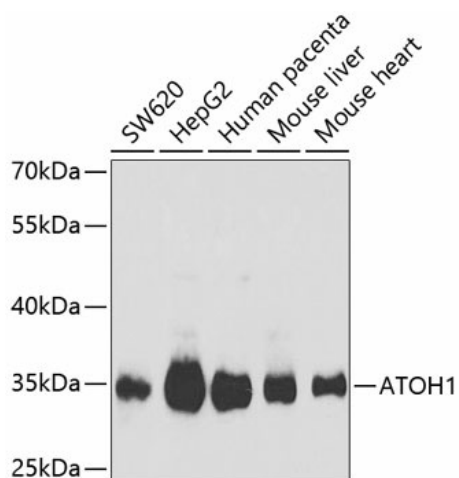
Product datasheet for **TA373794S**

ATOH1 Rabbit Polyclonal Antibody

Product data:

Product Type:	Primary Antibodies
Applications:	ELISA, WB
Recommended Dilution:	WB, 1:500 - 1:2000 ELISA, Recommended starting concentration is 1 µg/mL. Please optimize the concentration based on your specific assay requirements.
Reactivity:	Human, Mouse
Modifications:	Unmodified
Host:	Rabbit
Isotype:	IgG
Clonality:	Polyclonal
Formulation:	Buffer: PBS with 0.02% sodium azide, 50% glycerol, pH 7.3.
Concentration:	lot specific
Purification:	Affinity purification
Conjugation:	Unconjugated
Storage:	Store at -20°C. Avoid freeze / thaw cycles.
Stability:	Shelf life: one year from despatch.
Predicted Protein Size:	38kDa
Gene Name:	atonal bHLH transcription factor 1
Database Link:	Entrez Gene 474 Human Q92858
Background:	Enables sequence-specific double-stranded DNA binding activity. Predicted to be involved in neuron differentiation; positive regulation of neuron differentiation; and regulation of transcription by RNA polymerase II. Predicted to act upstream of or within several processes, including generation of neurons; inner ear morphogenesis; and positive regulation of inner ear auditory receptor cell differentiation. Predicted to be part of chromatin. Predicted to be active in nucleus.
Synonyms:	ATH1; bHLHa14; HATH1; MATH-1; Math1


[View online »](#)

Product images:


Western blot analysis of various lysates using ATOH1 Rabbit pAb (TA373794) at 1:1000 dilution.

Secondary antibody: HRP-conjugated Goat anti-Rabbit IgG (H+L) (AS014) at 1:10000 dilution.

Lysates/proteins: 25µg per lane.

Blocking buffer: 3% nonfat dry milk in TBST.

Detection: ECL Basic Kit (RM00020).

Exposure time: 1s.