

Product datasheet for **TA373789S**

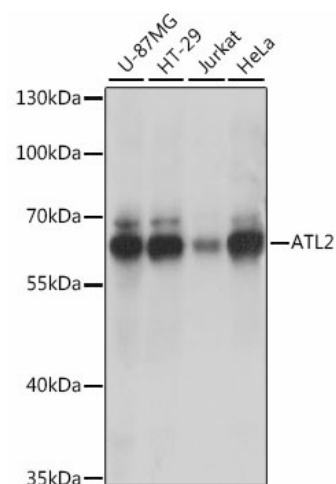
ARL6IP2 (ATL2) Rabbit Polyclonal Antibody

Product data:

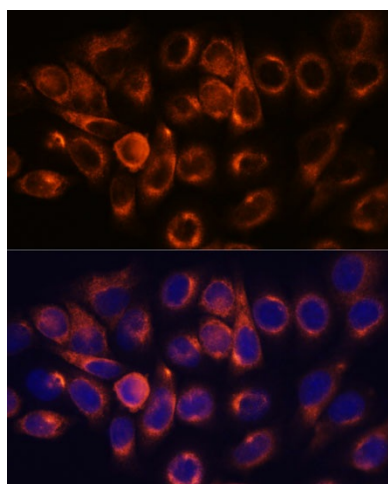
Product Type:	Primary Antibodies
Applications:	ELISA, ICC/IF, WB
Recommended Dilution:	WB, 1:500 - 1:1000 IF/ICC, 1:50 - 1:200 ELISA, Recommended starting concentration is 1 µg/mL. Please optimize the concentration based on your specific assay requirements.
Reactivity:	Human, Mouse, Rat
Modifications:	Unmodified
Host:	Rabbit
Isotype:	IgG
Clonality:	Polyclonal
Formulation:	PBS with 0.05% proclin300, 50% glycerol, pH7.3.
Concentration:	lot specific
Purification:	Affinity purification
Conjugation:	Unconjugated
Storage:	Store at -20°C. Avoid freeze / thaw cycles.
Stability:	Shelf life: one year from despatch.
Predicted Protein Size:	66kDa
Gene Name:	atlastin GTPase 2
Database Link:	Entrez Gene 64225 Human Q8NHH9
Background:	Enables identical protein binding activity. Involved in Golgi organization; endoplasmic reticulum tubular network membrane organization; and protein homooligomerization. Located in endoplasmic reticulum tubular network membrane. Is integral component of membrane.
Synonyms:	Aip-2; ARL3IP2; ARL6IP2; atlastin2; FLJ23293

[View online »](#)

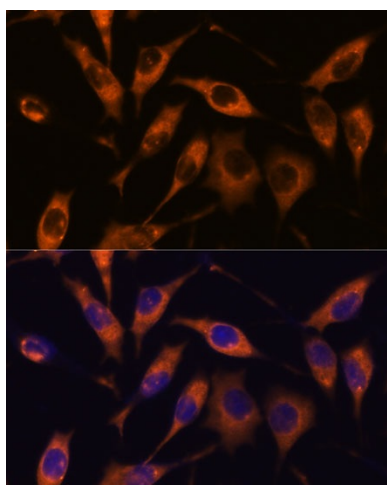
Product images:



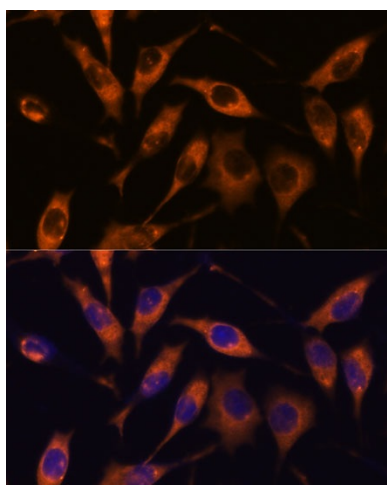
Western blot analysis of lysates from HepG2 cells



Immunofluorescence analysis of C6 cells using ATL2 Rabbit pAb ([TA373789]) at dilution of 1:100. Secondary antibody: Cy3-conjugated Goat anti-Rabbit IgG (H+L) (AS007) at 1:500 dilution. Blue: DAPI for nuclear staining.



Immunofluorescence analysis of HeLa cells using ATL2 Rabbit pAb ([TA373789]) at dilution of 1:100. Secondary antibody: Cy3-conjugated Goat anti-Rabbit IgG (H+L) (AS007) at 1:500 dilution. Blue: DAPI for nuclear staining.



Immunofluorescence analysis of L929 cells using ATL2 Rabbit pAb ([TA373789]) at dilution of 1:100. Secondary antibody: Cy3-conjugated Goat anti-Rabbit IgG (H+L) (AS007) at 1:500 dilution. Blue: DAPI for nuclear staining.