

## Product datasheet for **TA373789**

### ARL6IP2 (ATL2) Rabbit Polyclonal Antibody

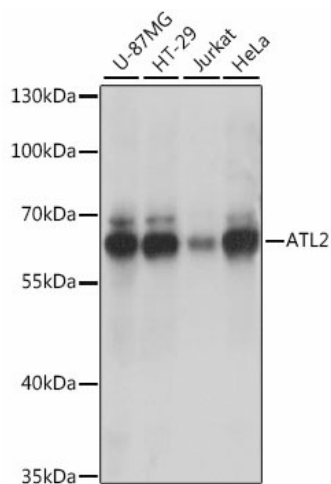
#### Product data:

Product Type:	Primary Antibodies
Applications:	ICC/IF, WB
Recommended Dilution:	WB,1:500 - 1:2000 IF,1:50 - 1:200
Reactivity:	Human, Mouse, Rat
Modifications:	Unmodified
Host:	Rabbit
Isotype:	IgG
Clonality:	Polyclonal
Immunogen:	Recombinant fusion protein containing a sequence corresponding to amino acids 390-470 of human ATL2 (NP_001129145.1).
Formulation:	PBS with 0.05% proclin300,50% glycerol,pH7.3.
Concentration:	lot specific
Purification:	Affinity purification
Conjugation:	Unconjugated
Storage:	Store at -20°C. Avoid freeze / thaw cycles.
Stability:	Shelf life: one year from despatch.
Predicted Protein Size:	46kDa/64kDa/65kDa/66kDa
Gene Name:	atlastin GTPase 2
Database Link:	<a href="#">Entrez Gene 64225 Human Q8NHH9</a>
Background:	GTPase tethering membranes through formation of trans-homooligomers and mediating homotypic fusion of endoplasmic reticulum membranes. Functions in endoplasmic reticulum tubular network biogenesis.
Synonyms:	Aip-2; ARL3IP2; ARL6IP2; atlastin2; FLJ23293

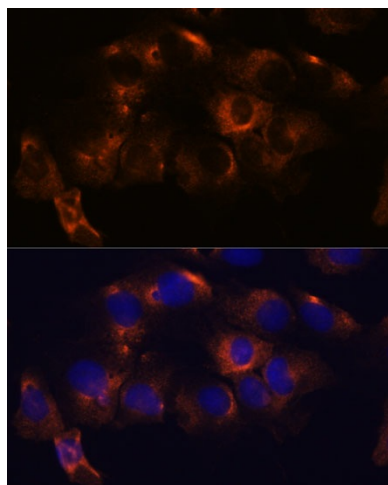


[View online »](#)

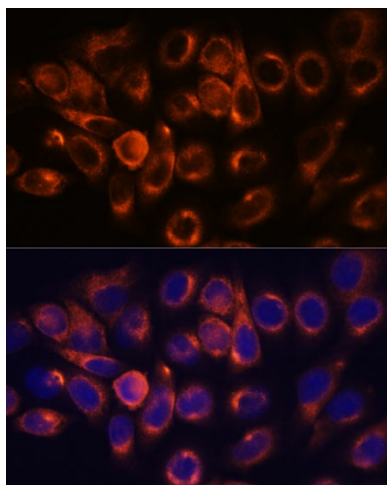
## Product images:



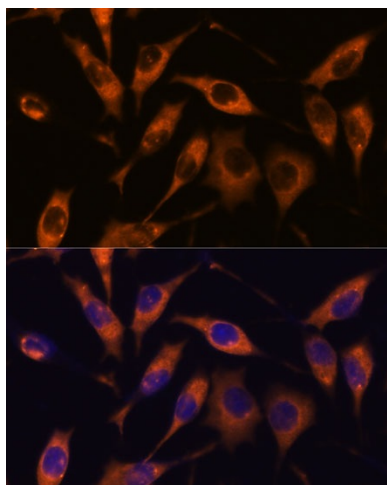
Western blot analysis of extracts of various cell lines, using ATL2 antibody (TA373789) at 1:1000 dilution. | Secondary antibody: HRP Goat Anti-Rabbit IgG (H+L) at 1:10000 dilution. | Lysates/proteins: 25ug per lane. | Blocking buffer: 3% nonfat dry milk in TBST. | Detection: ECL Basic Kit. | Exposure time: 10s.



Immunofluorescence analysis of C6 cells using ATL2 antibody (TA373789) at dilution of 1:100. Blue: DAPI for nuclear staining.



Immunofluorescence analysis of HeLa cells using ATL2 antibody (TA373789) at dilution of 1:100.  
Blue: DAPI for nuclear staining.



Immunofluorescence analysis of L929 cells using ATL2 antibody (TA373789) at dilution of 1:100.  
Blue: DAPI for nuclear staining.