

## Product datasheet for **TA373786S**

### ATG9A Rabbit Polyclonal Antibody

#### Product data:

Product Type:	Primary Antibodies
Applications:	ICC/IF, WB
Recommended Dilution:	WB,1:1000 - 1:2000 IF,1:50 - 1:200
Reactivity:	Human
Modifications:	Unmodified
Host:	Rabbit
Isotype:	IgG
Clonality:	Polyclonal
Immunogen:	Recombinant fusion protein containing a sequence corresponding to amino acids 180-290 of human ATG9A (NP_076990.4).
Formulation:	Buffer: PBS with 0.02% sodium azide,50% glycerol,pH7.3.
Concentration:	lot specific
Purification:	Affinity purification
Conjugation:	Unconjugated
Storage:	Store at -20°C. Avoid freeze / thaw cycles.
Stability:	Shelf life: one year from despatch.
Predicted Protein Size:	60kDa/87kDa/94kDa
Gene Name:	autophagy related 9A
Database Link:	<a href="#">Entrez Gene 79065 Human Q7Z3C6</a>



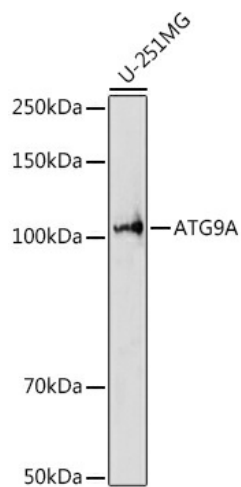
[View online »](#)

**Background:**

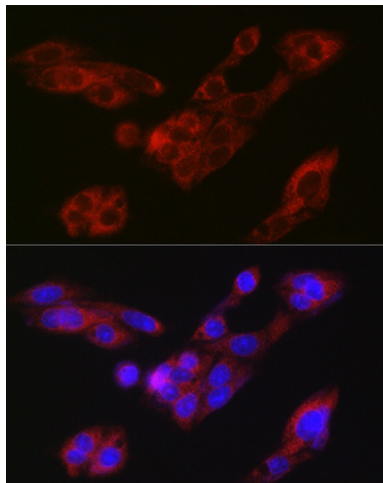
Phospholipid scramblase involved in autophagy by mediating autophagosomal membrane expansion. Cycles between the preautophagosomal structure/phagophore assembly site (PAS) and the cytoplasmic vesicle pool and supplies membrane for the growing autophagosome. Lipid scramblase activity plays a key role in preautophagosomal structure/phagophore assembly by distributing the phospholipids that arrive through ATG2 (ATG2A or ATG2B from the cytoplasmic to the luminal leaflet of the bilayer, thereby driving autophagosomal membrane expansion. Also required to supply phosphatidylinositol 4-phosphate to the autophagosome initiation site by recruiting the phosphatidylinositol 4-kinase beta (PI4KB in a process dependent on ARFIP2, but not ARFIP1. In addition to autophagy, also plays a role in necrotic cell death (By similarity).

**Synonyms:**

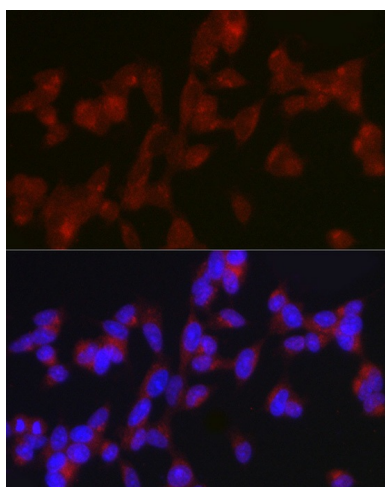
APG9L1; FLJ22169; MGD3208; OTTHUMP00000206049

**Product images:**

Western blot analysis of extracts of U-251MG cells, using ATG9A antibody ([TA373786]) at 1:1000 dilution. | Secondary antibody: HRP Goat Anti-Rabbit IgG (H+L) at 1:10000 dilution. | Lysates/proteins: 25ug per lane. | Blocking buffer: 3% nonfat dry milk in TBST. | Detection: ECL Basic Kit . | Exposure time: 30s.



Immunofluorescence analysis of HepG2 cells using ATG9A Rabbit pAb ([TA373786]) at dilution of 1:150 (40x lens). Blue: DAPI for nuclear staining.



Immunofluorescence analysis of SH-SY5Y cells using ATG9A Rabbit pAb ([TA373786]) at dilution of 1:150 (40x lens). Blue: DAPI for nuclear staining.