

## Product datasheet for **TA373782**

### ATG4D Rabbit Polyclonal Antibody

#### Product data:

|                         |   |
|-------------------------|---|
| Product Type:           | Primary Antibodies  |
| Applications:           | IF, WB  |
| Recommended Dilution:   | WB, 1:500 - 1:2000<br>IF, 1:50 - 1:200  |
| Reactivity:             | Human, Mouse, Rat   |
| Modifications:          | Unmodified  |
| Host:                   | Rabbit  |
| Isotype:                | IgG   |
| Clonality:              | Polyclonal  |
| Immunogen:              | Recombinant fusion protein containing a sequence corresponding to amino acids 1-230 of human ATG4D (NP_116274.3). |
| Formulation:            | Buffer: PBS with 0.02% sodium azide, 50% glycerol, pH 7.3.  |
| Concentration:          | lot specific  |
| Purification:           | Affinity purification   |
| Conjugation:            | Unconjugated  |
| Storage:                | Store at -20°C. Avoid freeze / thaw cycles.   |
| Stability:              | Shelf life: one year from despatch.   |
| Predicted Protein Size: | 16kDa/52kDa   |
| Gene Name:              | autophagy related 4D cysteine peptidase   |
| Database Link:          | <a href="#">Entrez Gene 84971 Human</a><br><a href="#">Q86TLO</a>   |



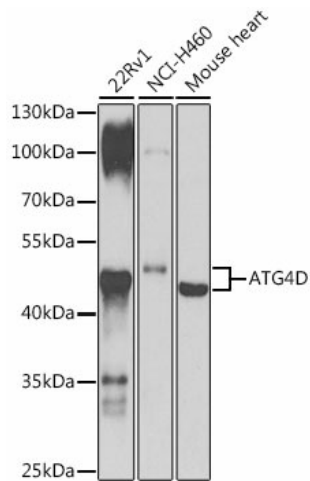
[View online »](#)

**Background:**

Autophagy is the process by which endogenous proteins and damaged organelles are destroyed intracellularly. Autophagy is postulated to be essential for cell homeostasis and cell remodeling during differentiation, metamorphosis, non-apoptotic cell death, and aging. Reduced levels of autophagy have been described in some malignant tumors, and a role for autophagy in controlling the unregulated cell growth linked to cancer has been proposed. This gene belongs to the autophagy-related protein 4 (Atg4) family of C54 endopeptidases. Members of this family encode proteins that play a role in the biogenesis of autophagosomes, which sequester the cytosol and organelles for degradation by lysosomes. Alternative splicing results in multiple transcript variants.

**Synonyms:**

APG4-D; APG4D; AUTL4; Autophagin-4

**Product images:**

Western blot analysis of extracts of various cell lines, using ATG4D antibody (TA373782) at 1:1000 dilution. | Secondary antibody: HRP Goat Anti-Rabbit IgG (H+L) at 1:10000 dilution. | Lysates/proteins: 25ug per lane. | Blocking buffer: 3% nonfat dry milk in TBST. | Detection: ECL Basic Kit . | Exposure time: 90s.