

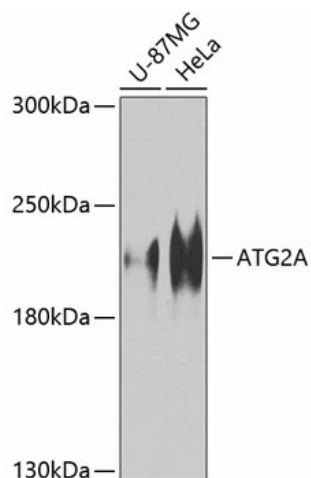
Product datasheet for **TA373777**

ATG2A Rabbit Polyclonal Antibody

Product data:

Product Type:	Primary Antibodies
Applications:	ELISA, WB
Recommended Dilution:	WB, 1:500 - 1:2000 ELISA, Recommended starting concentration is 1 µg/mL. Please optimize the concentration based on your specific assay requirements.
Reactivity:	Human
Modifications:	Unmodified
Host:	Rabbit
Isotype:	IgG
Clonality:	Polyclonal
Formulation:	Buffer: PBS with 0.02% sodium azide, 50% glycerol, pH 7.3.
Concentration:	lot specific
Purification:	Affinity purification
Conjugation:	Unconjugated
Storage:	Store at -20°C. Avoid freeze / thaw cycles.
Stability:	Shelf life: one year from despatch.
Predicted Protein Size:	213kDa
Gene Name:	autophagy related 2A
Database Link:	Entrez Gene 23130 Human Q2TAZ0
Background:	Predicted to enable phosphatidylinositol-3-phosphate binding activity. Involved in autophagosome assembly. Predicted to be located in endoplasmic reticulum membrane; lipid droplet; and phagophore assembly site membrane. Predicted to be active in phagophore assembly site. Predicted to be extrinsic component of membrane.
Synonyms:	KIAA0404; MGC117153

[View online »](#)

Product images:

Western blot analysis of various lysates using ATG2A Rabbit pAb (TA373777) at 1:1000 dilution. Secondary antibody: HRP-conjugated Goat anti-Rabbit IgG (H+L) at 1:10000 dilution. Lysates/proteins: 25µg per lane. Blocking buffer: 3% nonfat dry milk in TBST. Detection: ECL Basic Kit . Exposure time: 60s.