

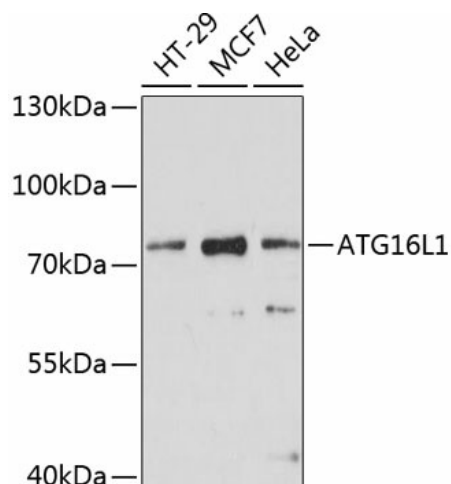
## Product datasheet for **TA373775S**

### ATG16L1 Rabbit Polyclonal Antibody

#### Product data:

Product Type:	Primary Antibodies
Applications:	ELISA, ICC/IF, IHC, WB
Recommended Dilution:	WB, 1:500 - 1:2000 IHC-P, 1:50 - 1:200 IF/ICC, 1:50 - 1:200 ELISA, Recommended starting concentration is 1 µg/mL. Please optimize the concentration based on your specific assay requirements.
Reactivity:	Human, Mouse, Rat
Modifications:	Unmodified
Host:	Rabbit
Isotype:	IgG
Clonality:	Polyclonal
Formulation:	Buffer: PBS with 0.02% sodium azide, 50% glycerol, pH 7.3.
Concentration:	lot specific
Purification:	Affinity purification
Conjugation:	Unconjugated
Storage:	Store at -20°C. Avoid freeze / thaw cycles.
Stability:	Shelf life: one year from despatch.
Predicted Protein Size:	68kDa
Gene Name:	autophagy related 16 like 1
Database Link:	<a href="#">Entrez Gene 55054 Human Q676U5</a>
Background:	The protein encoded by this gene is part of a large protein complex that is necessary for autophagy, the major process by which intracellular components are targeted to lysosomes for degradation. Defects in this gene are a cause of susceptibility to inflammatory bowel disease type 10 (IBD10). Several transcript variants encoding different isoforms have been found for this gene.
Synonyms:	APG16L; ATG16L; FLJ00045; FLJ10035; FLJ10828; FLJ22677; IBD10; WDR30


[View online »](#)

**Product images:**


Western blot analysis of various lysates using ATG16L1 Rabbit pAb ([TA373775]) at 1:1000 dilution.

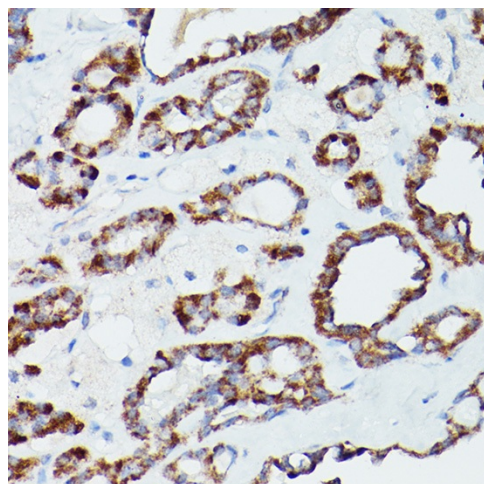
Secondary antibody: HRP-conjugated Goat anti-Rabbit IgG (H+L) (AS014) at 1:10000 dilution.

Lysates/proteins: 25µg per lane.

Blocking buffer: 3% nonfat dry milk in TBST.

Detection: ECL Enhanced Kit (RM00021).

Exposure time: 30s.



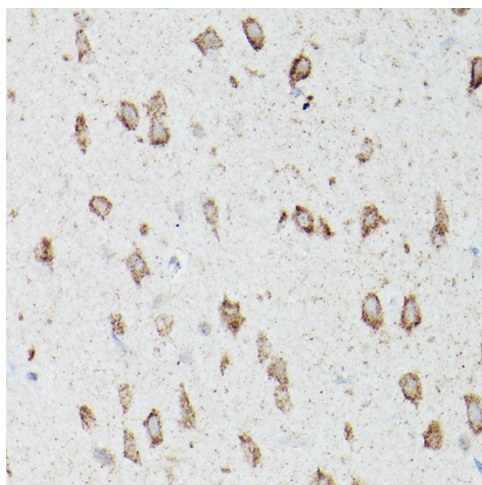
Immunohistochemistry analysis of paraffin-

embedded Human colon carcinoma using

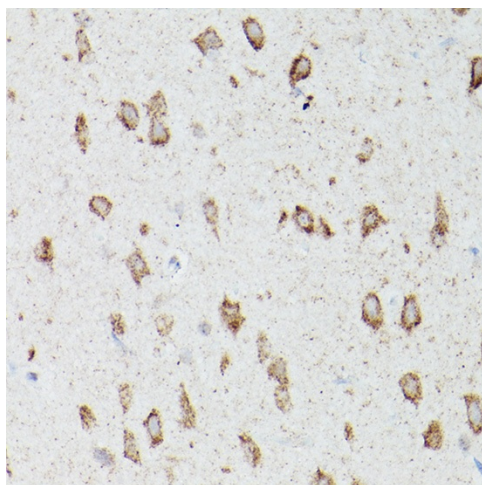
ATG16L1 Rabbit pAb ([TA373775]) at dilution of

1:100 (40x lens). Microwave antigen retrieval

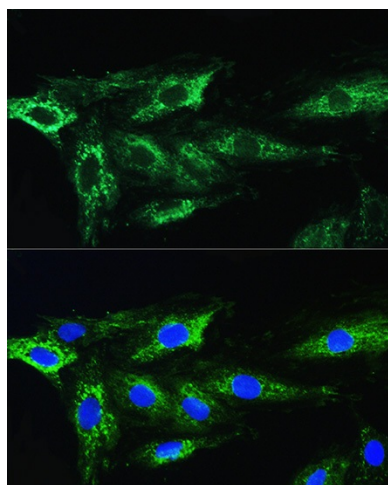
performed with 0.01M PBS Buffer (pH 7.2) prior to IHC staining.



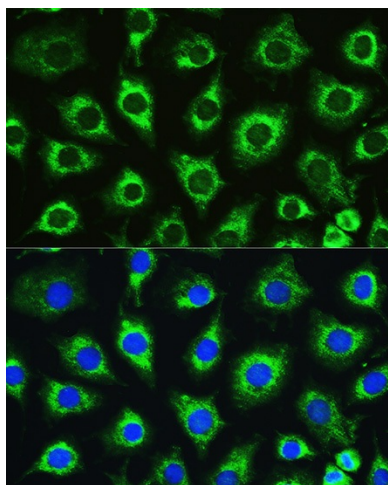
Immunohistochemistry analysis of paraffin-embedded Human thyroid cancer using ATG16L1 Rabbit pAb ([TA373775]) at dilution of 1:100 (40x lens). Microwave antigen retrieval performed with 0.01M PBS Buffer (pH 7.2) prior to IHC staining.



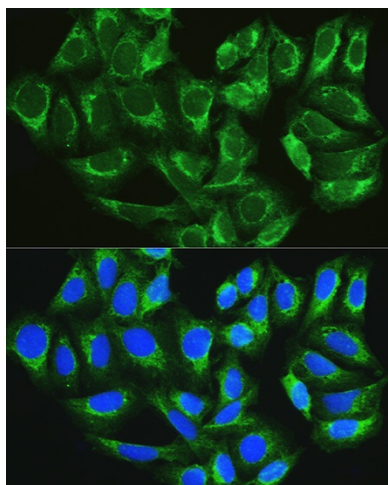
Immunohistochemistry analysis of paraffin-embedded Mouse brain using ATG16L1 Rabbit pAb ([TA373775]) at dilution of 1:100 (40x lens). Microwave antigen retrieval performed with 0.01M PBS Buffer (pH 7.2) prior to IHC staining.



Immunofluorescence analysis of H9C2 cells using ATG16L1 Rabbit pAb ([TA373775]) at dilution of 1:100. Blue: DAPI for nuclear staining.



Immunofluorescence analysis of L929 cells using ATG16L1 Rabbit pAb ([TA373775]) at dilution of 1:100. Blue: DAPI for nuclear staining.



Immunofluorescence analysis of U2OS cells using ATG16L1 Rabbit pAb ([TA373775]) at dilution of 1:100. Blue: DAPI for nuclear staining.