

Product datasheet for **TA373775**

ATG16L1 Rabbit Polyclonal Antibody

Product data:

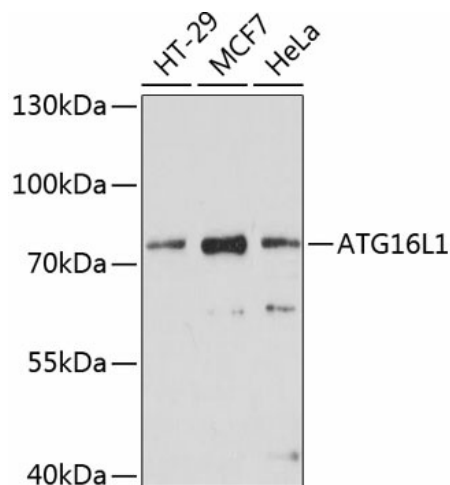
Product Type:	Primary Antibodies
Applications:	ICC/IF, IHC, WB
Recommended Dilution:	WB,1:500 - 1:2000 IHC,1:50 - 1:200 IF,1:50 - 1:200
Reactivity:	Human, Mouse, Rat
Modifications:	Unmodified
Host:	Rabbit
Isotype:	IgG
Clonality:	Polyclonal
Immunogen:	A synthetic peptide corresponding to a sequence within amino acids 200-300 of human ATG16L1 (NP_110430.5).
Formulation:	Buffer: PBS with 0.02% sodium azide,50% glycerol,pH7.3.
Concentration:	lot specific
Purification:	Affinity purification
Conjugation:	Unconjugated
Storage:	Store at -20°C. Avoid freeze / thaw cycles.
Stability:	Shelf life: one year from despatch.
Predicted Protein Size:	47kDa/49kDa/53kDa/66kDa/68kDa
Gene Name:	autophagy related 16 like 1
Database Link:	Entrez Gene 55054 Human Q676U5
Background:	The protein encoded by this gene is part of a large protein complex that is necessary for autophagy, the major process by which intracellular components are targeted to lysosomes for degradation. Defects in this gene are a cause of susceptibility to inflammatory bowel disease type 10 (IBD10). Several transcript variants encoding different isoforms have been found for this gene.



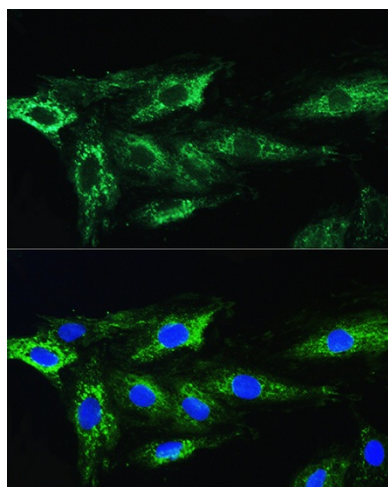
[View online »](#)

Synonyms: APG16L; ATG16L; FLJ00045; FLJ10035; FLJ10828; FLJ22677; IBD10; WDR30

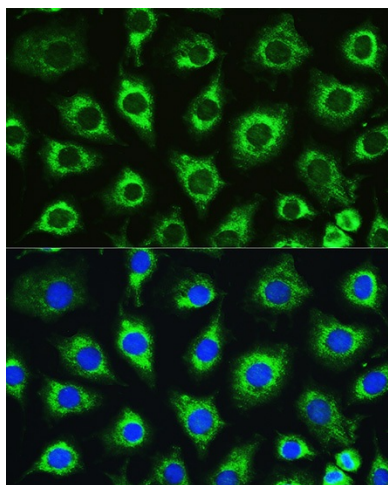
Product images:



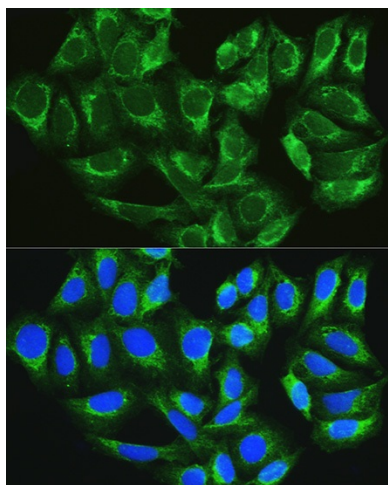
Western blot analysis of extracts of various cell lines, using ATG16L1 antibody (TA373775) at 1:1000 dilution. | Secondary antibody: HRP Goat Anti-Rabbit IgG (H+L) at 1:10000 dilution. | Lysates/proteins: 25ug per lane. | Blocking buffer: 3% nonfat dry milk in TBST. | Detection: ECL Enhanced Kit. | Exposure time: 30s.



Immunofluorescence analysis of H9C2 cells using ATG16L1 antibody (TA373775) at dilution of 1:100. Blue: DAPI for nuclear staining.



Immunofluorescence analysis of L929 cells using ATG16L1 antibody (TA373775) at dilution of 1:100. Blue: DAPI for nuclear staining.



Immunofluorescence analysis of U2OS cells using ATG16L1 antibody (TA373775) at dilution of 1:100. Blue: DAPI for nuclear staining.