

## Product datasheet for **TA373752**

### TUG (ASPSCR1) Rabbit Polyclonal Antibody

#### Product data:

Product Type:	Primary Antibodies
Applications:	ICC/IF, IP, WB
Recommended Dilution:	WB,1:500 - 1:2000 IF,1:50 - 1:200 IP,1:50 - 1:100
Reactivity:	Human, Mouse, Rat
Modifications:	Unmodified
Host:	Rabbit
Isotype:	IgG
Clonality:	Polyclonal
Immunogen:	Recombinant fusion protein containing a sequence corresponding to amino acids 284-553 of human TUG/ASPSCR1 (NP_076988.1).
Formulation:	Buffer: PBS with 0.02% sodium azide,50% glycerol,pH7.3.
Concentration:	lot specific
Purification:	Affinity purification
Conjugation:	Unconjugated
Storage:	Store at -20°C. Avoid freeze / thaw cycles.
Stability:	Shelf life: one year from despatch.
Predicted Protein Size:	37kDa/54kDa/60kDa/69kDa
Gene Name:	ASPSCR1, UBX domain containing tether for SLC2A4
Database Link:	<a href="#">Entrez Gene 79058 Human Q9BZE9</a>



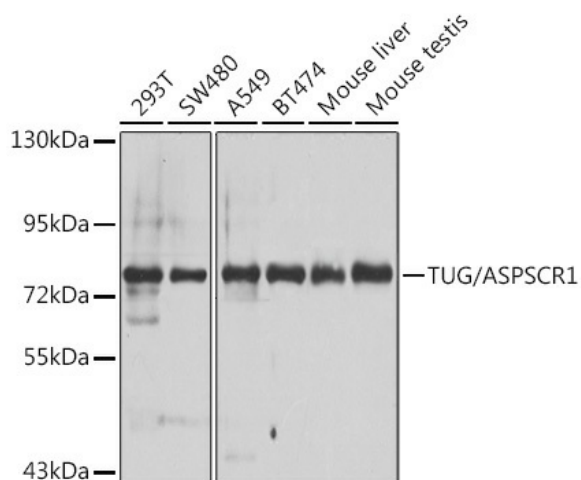
[View online »](#)

**Background:**

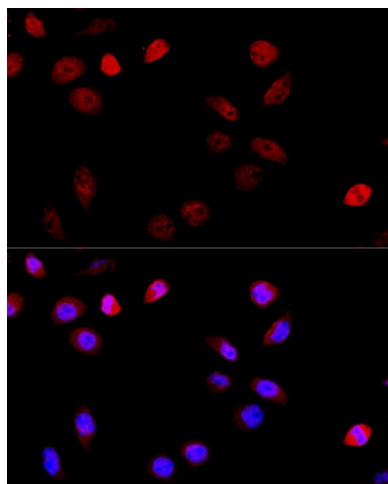
The protein encoded by this gene contains a UBX domain and interacts with glucose transporter type 4 (GLUT4). This protein is a tether, which sequesters the GLUT4 in intracellular vesicles in muscle and fat cells in the absence of insulin, and redistributes the GLUT4 to the plasma membrane within minutes of insulin stimulation. Translocation t(X;17) (p11;q25) of this gene with transcription factor TFE3 gene results in a ASPSCR1-TFE3 fusion protein in alveolar soft part sarcoma and in renal cell carcinomas. Multiple alternatively spliced transcript variants have been found.

**Synonyms:**

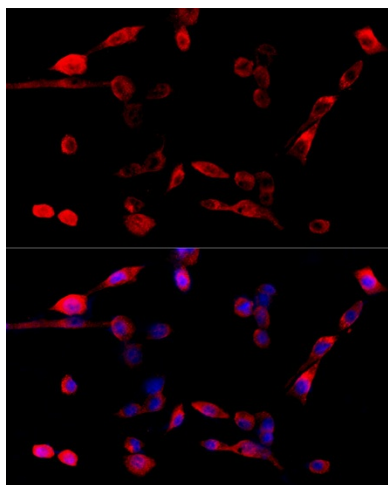
ASPSCR1; ASPL; ASPS; FLJ45380; RCC17; TUG; UBXD9; UBXN9

**Product images:**


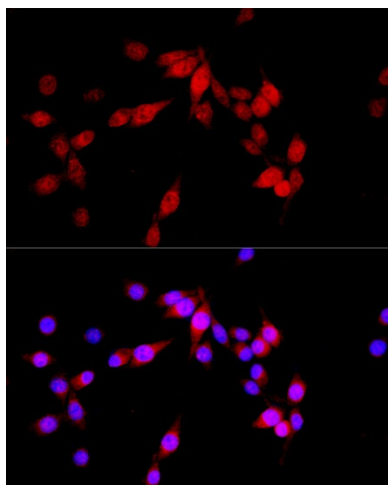
Western blot analysis of extracts of various cell lines, using TUG/ASPSCR1 antibody (TA373752) at 1:1000 dilution. | Secondary antibody: HRP Goat Anti-Rabbit IgG (H+L) at 1:10000 dilution. | Lysates/proteins: 25ug per lane. | Blocking buffer: 3% nonfat dry milk in TBST. | Detection: ECL Basic Kit . | Exposure time: 30s.



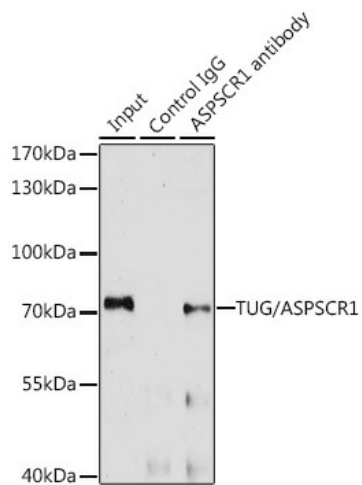
Immunofluorescence analysis of HeLa cells using TUG/ASPSCR1 antibody (TA373752) at dilution of 1:100 (40x lens). Blue: DAPI for nuclear staining.



Immunofluorescence analysis of NIH/3T3 cells using TUG/ASPSCR1 antibody (TA373752) at dilution of 1:100 (40x lens). Blue: DAPI for nuclear staining.



Immunofluorescence analysis of PC-12 cells using TUG/ASPSCR1 antibody (TA373752) at dilution of 1:100 (40x lens). Blue: DAPI for nuclear staining.



Immunoprecipitation analysis of 200ug extracts of A-549 cells, using 3 ug TUG/ASPSCR1 antibody (TA373752). Western blot was performed from the immunoprecipitate using TUG/ASPSCR1 antibody (TA373752) at a dilution of 1:1000.