

Product datasheet for **TA373750**

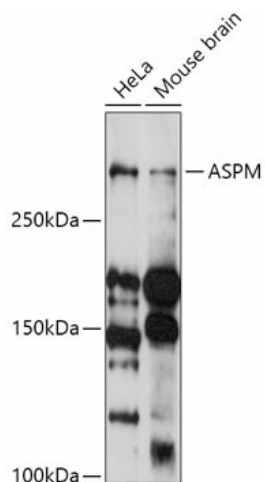
ASPM Rabbit Polyclonal Antibody

Product data:

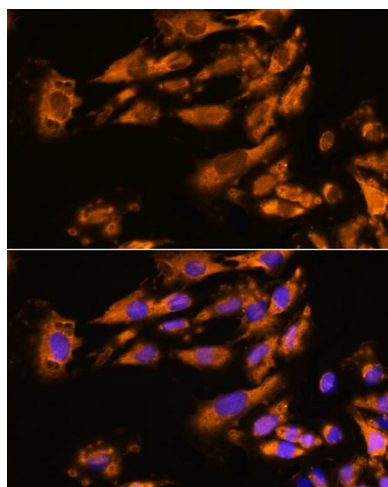
Product Type:	Primary Antibodies
Applications:	ICC/IF, WB
Recommended Dilution:	WB,1:500 - 1:2000 IF,1:50 - 1:200
Reactivity:	Human, Mouse, Rat
Host:	Rabbit
Isotype:	IgG
Clonality:	Polyclonal
Immunogen:	A synthetic peptide of human ASPM.
Formulation:	Buffer: PBS with 0.02% sodium azide,50% glycerol,pH7.3.
Concentration:	lot specific
Purification:	Affinity purification
Conjugation:	Unconjugated
Storage:	Store at -20°C. Avoid freeze / thaw cycles.
Stability:	Shelf life: one year from despatch.
Gene Name:	abnormal spindle microtubule assembly
Database Link:	Entrez Gene 259266 Human Q8IZT6
Synonyms:	ASP; Calmbp1; DKFZp686N06184; FLJ10517; FLJ10549; FLJ43117; MCPH5



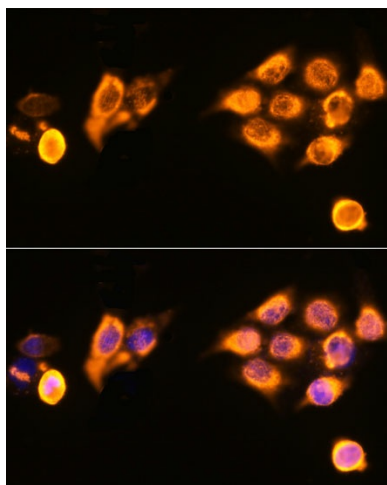
[View online »](#)

Product images:

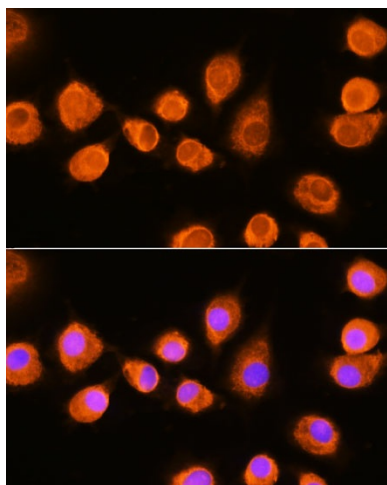
Western blot analysis of extracts of various cell lines, using ASPM antibody (TA373750) at 1:1000 dilution. | Secondary antibody: HRP Goat Anti-Rabbit IgG (H+L) at 1:10000 dilution. | Lysates/proteins: 25ug per lane. | Blocking buffer: 3% nonfat dry milk in TBST. | Detection: ECL Basic Kit . | Exposure time: 90s.



Immunofluorescence analysis of C6 cells using ASPM antibody (TA373750) at dilution of 1:100. Blue: DAPI for nuclear staining.



Immunofluorescence analysis of HeLa cells using ASPM antibody (TA373750) at dilution of 1:100. Blue: DAPI for nuclear staining.



Immunofluorescence analysis of L929 cells using ASPM antibody (TA373750) at dilution of 1:100. Blue: DAPI for nuclear staining.