

## Product datasheet for **TA373745S**

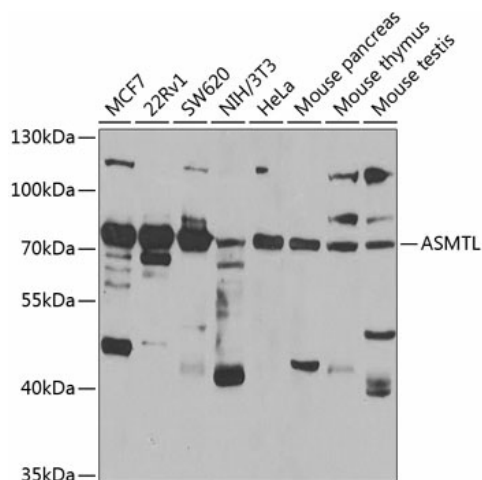
### ASMTL Rabbit Polyclonal Antibody

#### Product data:

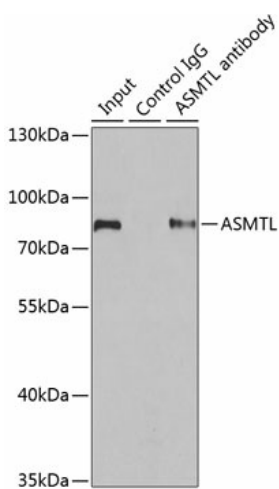
Product Type:	Primary Antibodies
Applications:	IP, WB
Recommended Dilution:	WB, 1:500 - 1:2000 IP, 1:50 - 1:200
Reactivity:	Human, Mouse
Modifications:	Unmodified
Host:	Rabbit
Isotype:	IgG
Clonality:	Polyclonal
Immunogen:	Recombinant fusion protein containing a sequence corresponding to amino acids 1-290 of human ASMTL (NP_004183.2).
Formulation:	Buffer: PBS with 0.02% sodium azide, 50% glycerol, pH 7.3.
Concentration:	lot specific
Purification:	Affinity purification
Conjugation:	Unconjugated
Storage:	Store at -20°C. Avoid freeze / thaw cycles.
Stability:	Shelf life: one year from despatch.
Predicted Protein Size:	62kDa/67kDa/68kDa
Gene Name:	acetylserotonin O-methyltransferase-like
Database Link:	<a href="#">Entrez Gene 8623 Human O95671</a>
Background:	The protein encoded by this gene has an N-terminus that is similar to the multicopy associated filamentation (maf) protein of <i>Bacillus subtilis</i> and to orfE of <i>Escherichia coli</i> , while the C-terminus is similar to N-acetylserotonin O-methyltransferase. This gene is located in the pseudoautosomal region 1 (PAR1) of X and Y chromosomes. Three transcript variants encoding different isoforms have been found for this gene.
Synonyms:	ASMTLX; ASMTLY; ASTML



[View online »](#)

**Product images:**


Western blot analysis of extracts of various cell lines, using ASMTL antibody ([TA373745]) at 1:1000 dilution. | Secondary antibody: HRP Goat Anti-Rabbit IgG (H+L) at 1:10000 dilution. | Lysates/proteins: 25ug per lane. | Blocking buffer: 3% nonfat dry milk in TBST.



Immunoprecipitation analysis of 200ug extracts of SW620 cells using 1ug ASMTL antibody ([TA373745]). Western blot was performed from the immunoprecipitate using ASMTL antibody ([TA373745]) at a dilution of 1:500.