

## Product datasheet for **TA373728S**

### ASCC2 Rabbit Polyclonal Antibody

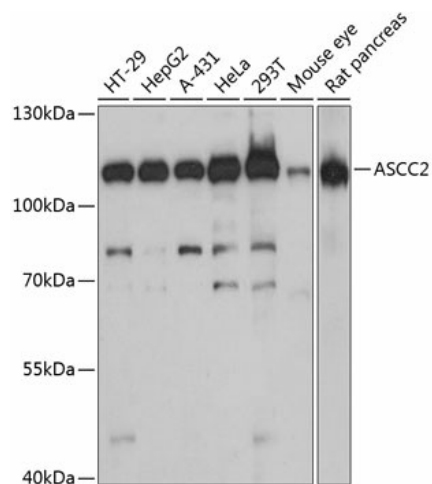
#### Product data:

Product Type:	Primary Antibodies
Applications:	ELISA, WB
Recommended Dilution:	WB, 1:500 - 1:2000 ELISA, Recommended starting concentration is 1 µg/mL. Please optimize the concentration based on your specific assay requirements.
Reactivity:	Human, Mouse, Rat
Modifications:	Unmodified
Host:	Rabbit
Isotype:	IgG
Clonality:	Polyclonal
Formulation:	Buffer: PBS with 0.02% sodium azide, 50% glycerol, pH 7.3.
Concentration:	lot specific
Purification:	Affinity purification
Conjugation:	Unconjugated
Storage:	Store at -20°C. Avoid freeze / thaw cycles.
Stability:	Shelf life: one year from despatch.
Predicted Protein Size:	86kDa
Gene Name:	activating signal cointegrator 1 complex subunit 2
Database Link:	<a href="#">Entrez Gene 84164 Human Q9H1I8</a>
Background:	Predicted to enable ubiquitin binding activity. Involved in regulation of transcription, DNA-templated; rescue of stalled ribosome; and ribosome-associated ubiquitin-dependent protein catabolic process. Located in nucleus. Part of activating signal cointegrator 1 complex.
Synonyms:	ASC1p100; DKFZp586O0223; FLJ21588; OTTHUMP00000199727



[View online »](#)

## Product images:



Western blot analysis of various lysates using ASCC2 Rabbit pAb (TA373728) at 1:3000 dilution. Secondary antibody: HRP-conjugated Goat anti-Rabbit IgG (H+L) (AS014) at 1:10000 dilution. Lysates/proteins: 25µg per lane. Blocking buffer: 3% nonfat dry milk in TBST. Detection: ECL Basic Kit (RM00020). Exposure time: 60s.