

## Product datasheet for **TA373728**

### ASCC2 Rabbit Polyclonal Antibody

#### Product data:

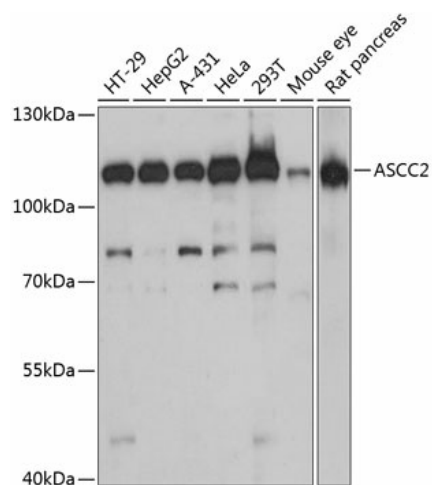
Product Type:	Primary Antibodies
Applications:	WB
Recommended Dilution:	WB,1:500 - 1:2000 IHC,1:50 - 1:100
Reactivity:	Human, Mouse, Rat
Modifications:	Unmodified
Host:	Rabbit
Isotype:	IgG
Clonality:	Polyclonal
Immunogen:	Recombinant fusion protein containing a sequence corresponding to amino acids 488-757 of human ASCC2 (NP_115580.2).
Formulation:	Buffer: PBS with 0.02% sodium azide,50% glycerol,pH7.3.
Concentration:	lot specific
Purification:	Affinity purification
Conjugation:	Unconjugated
Storage:	Store at -20°C. Avoid freeze / thaw cycles.
Stability:	Shelf life: one year from despatch.
Predicted Protein Size:	41kDa/77kDa/86kDa
Gene Name:	activating signal cointegrator 1 complex subunit 2
Database Link:	<a href="#">Entrez Gene 84164 Human Q9H118</a>
Background:	Plays a role in DNA damage repair as component of the ASCC complex. Recruits ASCC3 and ALKBH3 to sites of DNA damage by binding to polyubiquitinated proteins that have 'Lys-63'-linked polyubiquitin chains. Part of the ASC-1 complex that enhances NF-kappa-B, SRF and AP1 transactivation. Involved in activation of the ribosome quality control (RQC pathway, a pathway that degrades nascent peptide chains during problematic translation. As part of the ribosome quality control trigger (RQT complex, recognizes ZNF598-dependent ubiquitination of stalled ribosomes (By similarity).



[View online »](#)

Synonyms: ASC1p100; DKFZp586O0223; FLJ21588; OTTHUMP00000199727

### Product images:



Western blot analysis of extracts of various cell lines, using ASCC2 antibody (TA373728) at 1:3000 dilution. | Secondary antibody: HRP Goat Anti-Rabbit IgG (H+L) at 1:10000 dilution. | Lysates/proteins: 25ug per lane. | Blocking buffer: 3% nonfat dry milk in TBST. | Detection: ECL Basic Kit . | Exposure time: 60s.