

Product datasheet for **TA373722S**

Asb17 Rabbit Polyclonal Antibody

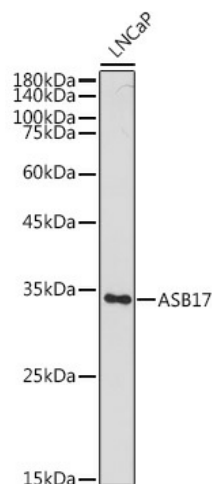
Product data:

Product Type:	Primary Antibodies
Applications:	ELISA, WB
Recommended Dilution:	WB, 1:500 - 1:1000 ELISA, Recommended starting concentration is 1 µg/mL. Please optimize the concentration based on your specific assay requirements.
Reactivity:	Human, Rat
Modifications:	Unmodified
Host:	Rabbit
Isotype:	IgG
Clonality:	Polyclonal
Formulation:	Buffer: PBS with 0.02% sodium azide, 50% glycerol, pH 7.3.
Concentration:	lot specific
Purification:	Affinity purification
Conjugation:	Unconjugated
Storage:	Store at -20°C. Avoid freeze / thaw cycles.
Stability:	Shelf life: one year from despatch.
Predicted Protein Size:	34kDa
Gene Name:	ankyrin repeat and SOCS box-containing 17
Database Link:	Q8VHP9
Background:	Predicted to be involved in intracellular signal transduction. Orthologous to human ASB17 (ankyrin repeat and SOCS box containing 17).
Synonyms:	Asb-17

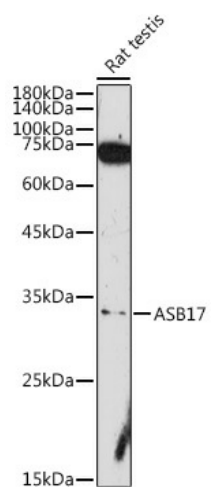


[View online »](#)

Product images:



Western blot analysis of lysates from LNCaP cells



Western blot analysis of lysates from Rat testis