

Product datasheet for **TA373689S**

ARMS2 Rabbit Polyclonal Antibody

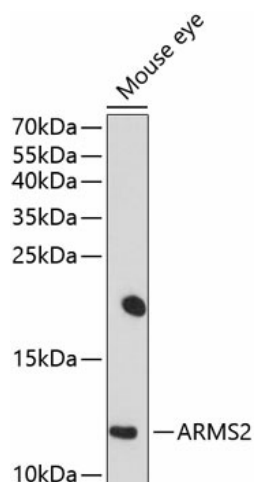
Product data:

Product Type:	Primary Antibodies
Applications:	ELISA, WB
Recommended Dilution:	WB, 1:200 - 1:1000 ELISA, Recommended starting concentration is 1 µg/mL. Please optimize the concentration based on your specific assay requirements.
Reactivity:	Mouse
Modifications:	Unmodified
Host:	Rabbit
Isotype:	IgG
Clonality:	Polyclonal
Formulation:	Buffer: PBS with 0.02% sodium azide, 50% glycerol, pH 7.3.
Concentration:	lot specific
Purification:	Affinity purification
Conjugation:	Unconjugated
Storage:	Store at -20°C. Avoid freeze / thaw cycles.
Stability:	Shelf life: one year from despatch.
Predicted Protein Size:	11kDa
Gene Name:	age-related maculopathy susceptibility 2
Database Link:	P0C7Q2
Background:	This gene encodes a small secreted protein specific to primates. This protein is a component of the choroidal extracellular matrix of the eye. Mutations in this gene are associated with age-related macular degeneration.
Synonyms:	ARMD8; LOC387715



[View online »](#)

Product images:



Western blot analysis of lysates from mouse eye