

Product datasheet for **TA373686S**

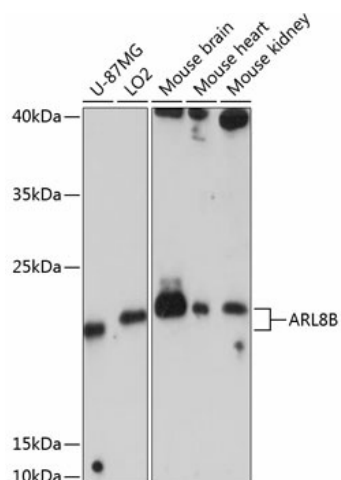
ARL8B Rabbit Polyclonal Antibody

Product data:

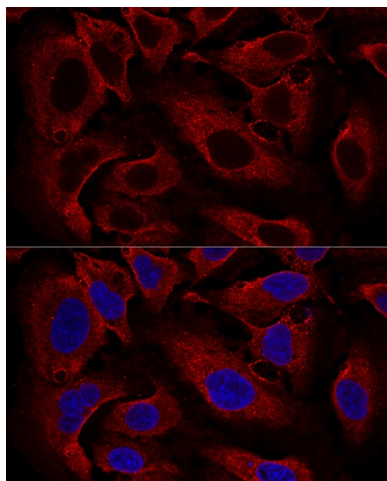
Product Type:	Primary Antibodies
Applications:	ELISA, ICC/IF, WB
Recommended Dilution:	WB, 1:500 - 1:3000 IF/ICC, 1:50 - 1:200 ELISA, Recommended starting concentration is 1 µg/mL. Please optimize the concentration based on your specific assay requirements.
Reactivity:	Human, Mouse
Modifications:	Unmodified
Host:	Rabbit
Isotype:	IgG
Clonality:	Polyclonal
Formulation:	Buffer: PBS with 0.02% sodium azide, 50% glycerol, pH 7.3.
Concentration:	lot specific
Purification:	Affinity purification
Conjugation:	Unconjugated
Storage:	Store at -20°C. Avoid freeze / thaw cycles.
Stability:	Shelf life: one year from despatch.
Predicted Protein Size:	22kDa
Gene Name:	ADP ribosylation factor like GTPase 8B
Database Link:	Entrez Gene 55207 Human Q9NVJ2
Background:	Enables guanyl ribonucleotide binding activity and tubulin binding activity. Involved in several processes, including calcium ion regulated lysosome exocytosis; lysosomal transport; and vesicle fusion. Located in cytoplasmic granule membrane; midbody; and spindle midzone. Colocalizes with lysosomal membrane.
Synonyms:	ARL10C; FLJ10702; Gie1


[View online »](#)

Product images:



Western blot analysis of various lysates using ARL8B Rabbit pAb ([TA373686]) at 1:3000 dilution. Secondary antibody: HRP-conjugated Goat anti-Rabbit IgG (H+L) (AS014) at 1:10000 dilution. Lysates/proteins: 25µg per lane. Blocking buffer: 3% nonfat dry milk in TBST. Detection: ECL Enhanced Kit (RM00021). Exposure time: 30s.



Confocal immunofluorescence analysis of U2OS cells using ARL8B Rabbit pAb ([TA373686]) at dilution of 1:100. Blue: DAPI for nuclear staining.