

## Product datasheet for **TA373679S**

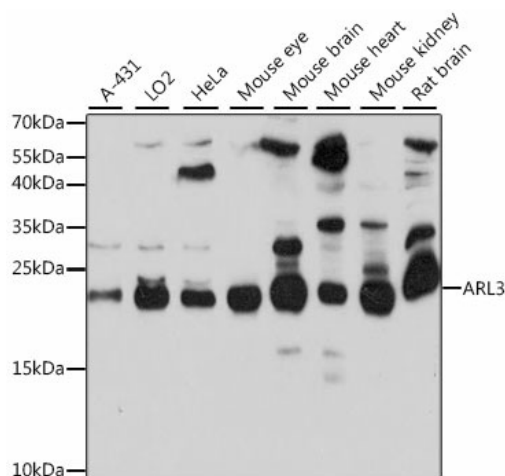
### ARL3 Rabbit Polyclonal Antibody

#### Product data:

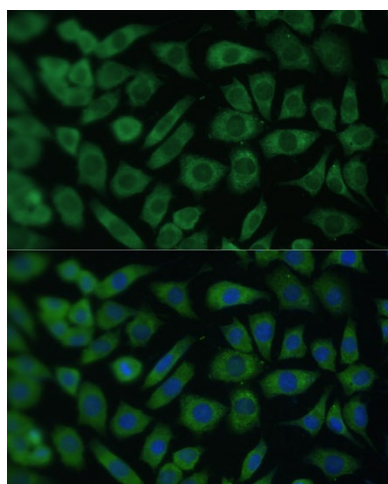
Product Type:	Primary Antibodies
Applications:	ELISA, ICC/IF, WB
Recommended Dilution:	WB, 1:500 - 1:2000 IF/ICC, 1:50 - 1:100 ELISA, Recommended starting concentration is 1 µg/mL. Please optimize the concentration based on your specific assay requirements.
Reactivity:	Human, Mouse, Rat
Modifications:	Unmodified
Host:	Rabbit
Isotype:	IgG
Clonality:	Polyclonal
Formulation:	Buffer: PBS with 0.02% sodium azide, 50% glycerol, pH 7.3.
Concentration:	lot specific
Purification:	Affinity purification
Conjugation:	Unconjugated
Storage:	Store at -20°C. Avoid freeze / thaw cycles.
Stability:	Shelf life: one year from despatch.
Predicted Protein Size:	20kDa
Gene Name:	ADP ribosylation factor like GTPase 3
Database Link:	<a href="#">Entrez Gene 403 Human P36405</a>
Background:	Enables GDP binding activity; GTP binding activity; and microtubule binding activity. Involved in several processes, including cilium assembly; protein localization to cilium; and small GTPase mediated signal transduction. Acts upstream of or within post-Golgi vesicle-mediated transport. Located in several cellular components, including microtubule cytoskeleton; midbody; and photoreceptor connecting cilium. Implicated in Joubert syndrome and retinitis pigmentosa 83.
Synonyms:	ARFL3


[View online »](#)

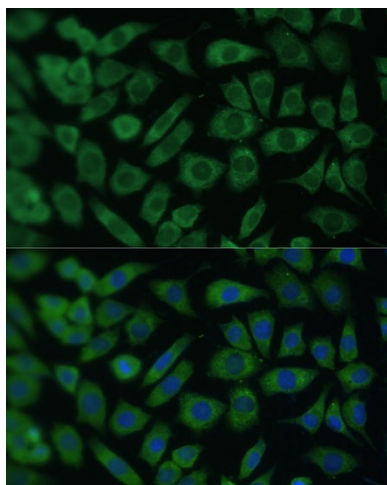
## Product images:



Western blot analysis of various lysates using ARL3 Rabbit pAb (TA373679S) at 1:1000 dilution. Secondary antibody: HRP-conjugated Goat anti-Rabbit IgG (H+L) (AS014) at 1:10000 dilution. Lysates/proteins: 25µg per lane. Blocking buffer: 3% nonfat dry milk in TBST. Detection: ECL Basic Kit (RM00020). Exposure time: 30s.



Immunofluorescence analysis of C6 cells using ARL3 Rabbit pAb (TA373679S) at dilution of 1:100 (40x lens). Secondary antibody: Cy3-conjugated Goat anti-Rabbit IgG (H+L) (AS007) at 1:500 dilution. Blue: DAPI for nuclear staining.



Immunofluorescence analysis of L929 cells using ARL3 Rabbit pAb ([TA373679]) at dilution of 1:100 (40x lens). Secondary antibody: Cy3-conjugated Goat anti-Rabbit IgG (H+L) (AS007) at 1:500 dilution. Blue: DAPI for nuclear staining.