

Product datasheet for **TA373671S**

ARIH1 Rabbit Polyclonal Antibody

Product data:

Product Type:	Primary Antibodies
Applications:	WB
Recommended Dilution:	WB,1:500 - 1:2000
Reactivity:	Human, Mouse, Rat
Host:	Rabbit
Isotype:	IgG
Clonality:	Polyclonal
Immunogen:	A synthetic peptide corresponding to a sequence within amino acids 400 to the C-terminus of human ARIH1 (NP_005735.2).
Formulation:	Buffer: PBS with 0.02% sodium azide,50% glycerol,pH7.3.
Concentration:	lot specific
Purification:	Affinity purification
Conjugation:	Unconjugated
Storage:	Store at -20°C. Avoid freeze / thaw cycles.
Stability:	Shelf life: one year from despatch.
Gene Name:	ariadne RBR E3 ubiquitin protein ligase 1
Database Link:	Entrez Gene 25820 Human Q9Y4X5



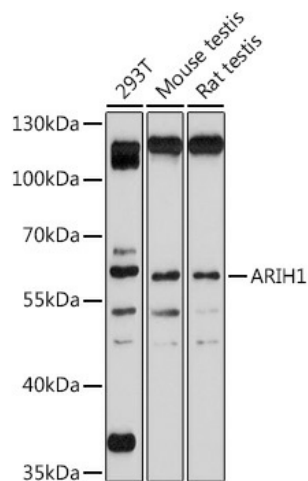
[View online »](#)

Background:

E3 ubiquitin-protein ligase, which catalyzes ubiquitination of target proteins together with ubiquitin-conjugating enzyme E2 UBE2L3. Acts as an atypical E3 ubiquitin-protein ligase by working together with cullin-RING ubiquitin ligase (CRL complexes) and initiating ubiquitination of CRL substrates: associates with CRL complexes and specifically mediates addition of the first ubiquitin on CRLs targets. The initial ubiquitin is then elongated by CDC34/UBE2R1 and UBE2R2. E3 ubiquitin-protein ligase activity is activated upon binding to neddylated cullin-RING ubiquitin ligase complexes. Plays a role in protein translation in response to DNA damage by mediating ubiquitination of EIF4E2, the consequences of EIF4E2 ubiquitination are however unclear. According to a report, EIF4E2 ubiquitination leads to promote EIF4E2 cap-binding and protein translation arrest. According to another report EIF4E2 ubiquitination leads to its subsequent degradation. Acts as the ligase involved in ISGylation of EIF4E2. In vitro, controls the degradation of the LINC (LInker of Nucleoskeleton and Cytoskeleton complex member SUN2) and may therefore have a role in the formation and localization of the LINC complex, and as a consequence, nuclear subcellular localization and nuclear morphology.

Synonyms:

ARI; ARI-1; DKFZp686O13120; FLJ20329; FLJ93118; H7-AP2; HARI; HHARI; MOP-6; MOP6; UBCH7BP

Product images:

Western blot analysis of extracts of various cell lines, using ARIH1 antibody ([TA373671]) at 1:1000 dilution. | Secondary antibody: HRP Goat Anti-Rabbit IgG (H+L) at 1:10000 dilution. | Lysates/proteins: 25ug per lane. | Blocking buffer: 3% nonfat dry milk in TBST. | Detection: ECL Basic Kit . | Exposure time: 90s.