

Product datasheet for TA373663S

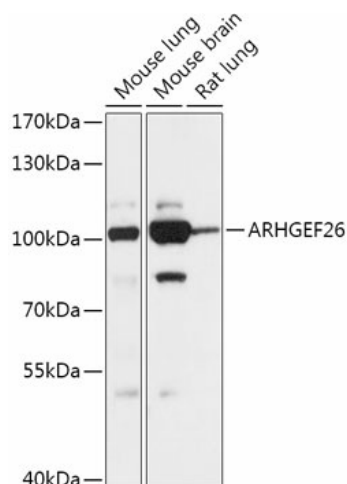
SGEF (ARHGEF26) Rabbit Polyclonal Antibody

Product data:

Product Type:	Primary Antibodies
Applications:	ELISA, ICC/IF, WB
Recommended Dilution:	WB, 1:500 - 1:2000 IF/ICC, 1:50 - 1:100 ELISA, Recommended starting concentration is 1 µg/mL. Please optimize the concentration based on your specific assay requirements.
Reactivity:	Human, Mouse, Rat
Modifications:	Unmodified
Host:	Rabbit
Isotype:	IgG
Clonality:	Polyclonal
Formulation:	Buffer: PBS with 0.02% sodium azide, 50% glycerol, pH 7.3.
Concentration:	lot specific
Purification:	Affinity purification
Conjugation:	Unconjugated
Storage:	Store at -20°C. Avoid freeze / thaw cycles.
Stability:	Shelf life: one year from despatch.
Predicted Protein Size:	97kDa
Gene Name:	Rho guanine nucleotide exchange factor 26
Database Link:	Entrez Gene 26084 Human Q96DR7
Background:	This gene encodes a member of the Rho-guanine nucleotide exchange factor (Rho-GEF) family. These proteins regulate Rho GTPases by catalyzing the exchange of GDP for GTP. The encoded protein specifically activates RhoG and plays a role in the promotion of macropinocytosis. Underexpression of the encoded protein may be a predictive marker of chemoresistant disease. Alternatively spliced transcript variants encoding multiple isoforms have been observed for this gene.
Synonyms:	4631416L12Rik; 8430436L14Rik; AI303572; AW491953; SGEF


[View online »](#)

Product images:



Western blot analysis of various lysates using ARHGEF26 Rabbit pAb ([TA373663]) at 1:1000 dilution.

Secondary antibody: HRP-conjugated Goat anti-Rabbit IgG (H+L) (AS014) at 1:10000 dilution.

Lysates/proteins: 25µg per lane.

Blocking buffer: 3% nonfat dry milk in TBST.

Detection: ECL Basic Kit (RM00020).

Exposure time: 10s.