

Product datasheet for **TA373663**

SGEF (ARHGEF26) Rabbit Polyclonal Antibody

Product data:

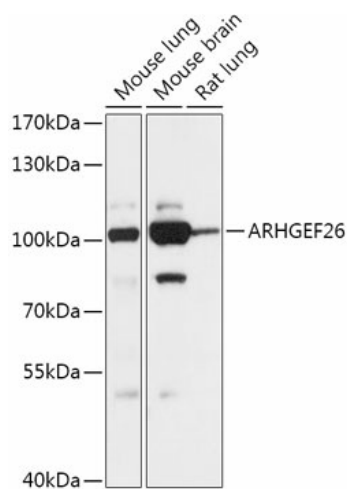
Product Type:	Primary Antibodies
Applications:	ICC/IF, WB
Recommended Dilution:	WB,1:500 - 1:2000 IHC,1:50 - 1:100 IF,1:50 - 1:100
Reactivity:	Human, Mouse, Rat
Modifications:	Unmodified
Host:	Rabbit
Isotype:	IgG
Clonality:	Polyclonal
Immunogen:	Recombinant fusion protein containing a sequence corresponding to amino acids 592-871 of human ARHGEF26 (NP_056410.3).
Formulation:	Buffer: PBS with 0.02% sodium azide,50% glycerol,pH7.3.
Concentration:	lot specific
Purification:	Affinity purification
Conjugation:	Unconjugated
Storage:	Store at -20°C. Avoid freeze / thaw cycles.
Stability:	Shelf life: one year from despatch.
Predicted Protein Size:	48kDa/88kDa/97kDa
Gene Name:	Rho guanine nucleotide exchange factor 26
Database Link:	Entrez Gene 26084 Human Q96DR7
Background:	This gene encodes a member of the Rho-guanine nucleotide exchange factor (Rho-GEF) family. These proteins regulate Rho GTPases by catalyzing the exchange of GDP for GTP. The encoded protein specifically activates RhoG and plays a role in the promotion of macropinocytosis. Underexpression of the encoded protein may be a predictive marker of chemoresistant disease. Alternatively spliced transcript variants encoding multiple isoforms have been observed for this gene. [provided by RefSeq, Oct 2011]



[View online »](#)

Synonyms: 4631416L12Rik; 8430436L14Rik; AI303572; AW491953; SGEF

Product images:



Western blot analysis of extracts of various cell lines, using ARHGEF26 antibody (TA373663) at 1:1000 dilution. | Secondary antibody: HRP Goat Anti-Rabbit IgG (H+L) at 1:10000 dilution. | Lysates/proteins: 25ug per lane. | Blocking buffer: 3% nonfat dry milk in TBST. | Detection: ECL Basic Kit . | Exposure time: 10s.