

Product datasheet for **TA373662S**

GEF H1 (ARHGEF2) Rabbit Polyclonal Antibody

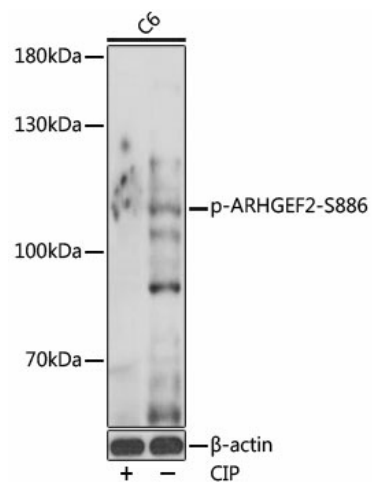
Product data:

Product Type:	Primary Antibodies
Applications:	WB
Recommended Dilution:	WB,1:500 - 1:2000
Reactivity:	Human, Mouse, Rat
Modifications:	Phospho S886
Host:	Rabbit
Isotype:	IgG
Clonality:	Polyclonal
Immunogen:	A phospho specific peptide corresponding to residues surrounding S886 of human ARHGEF2
Formulation:	Buffer: PBS with 0.02% sodium azide,50% glycerol,pH7.3.
Concentration:	lot specific
Purification:	Affinity purification
Conjugation:	Unconjugated
Storage:	Store at -20°C. Avoid freeze / thaw cycles.
Stability:	Shelf life: one year from despatch.
Predicted Protein Size:	108kDa/111kDa
Gene Name:	Rho/Rac guanine nucleotide exchange factor 2
Database Link:	Entrez Gene 9181 Human Q92974
Background:	Rho GTPases play a fundamental role in numerous cellular processes that are initiated by extracellular stimuli that work through G protein coupled receptors. The encoded protein may form complex with G proteins and stimulate rho-dependent signals. Alternatively spliced transcript variants encoding different isoforms have been identified.[provided by RefSeq, Jun 2009]
Synonyms:	DKFZp547L106; DKFZp547P1516; FLJ45440; GEF; GEF-H1; GEFH1; KIAA0651; LFP40; P40



[View online »](#)

Product images:



Western blot analysis of extracts of C6 cells, using Phospho-ARHGEF2-S886 antibody ([TA373662]) at 1:1000 dilution. C6 were treated by CIP (20ul CIP for each 400ul cell lysate) at 37°C for 1 hour. | Secondary antibody: HRP Goat Anti-Rabbit IgG (H+L) at 1:10000 dilution. | Lysates/proteins: 25ug per lane. | Blocking buffer: 3% BSA. | Detection: ECL Basic Kit. | Exposure time: 1s.