

## Product datasheet for **TA373660**

### ARHGEF10L Rabbit Polyclonal Antibody

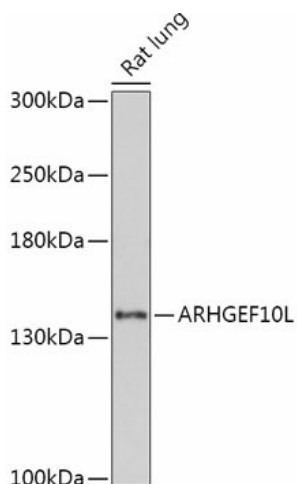
#### Product data:

|                       |   |
|-----------------------|---|
| Product Type:         | Primary Antibodies  |
| Applications:         | WB  |
| Recommended Dilution: | WB,1:500 - 1:2000   |
| Reactivity:           | Human, Rat  |
| Modifications:        | Unmodified  |
| Host:                 | Rabbit  |
| Isotype:              | IgG   |
| Clonality:            | Polyclonal  |
| Immunogen:            | Recombinant fusion protein containing a sequence corresponding to amino acids 1120-1230 of human ARHGEF10L (NP_001011722).  |
| Formulation:          | Buffer: PBS with 0.02% sodium azide,50% glycerol,pH7.3.   |
| Concentration:        | lot specific  |
| Purification:         | Affinity purification   |
| Conjugation:          | Unconjugated  |
| Storage:              | Store at -20°C. Avoid freeze / thaw cycles.   |
| Stability:            | Shelf life: one year from despatch.   |
| Gene Name:            | Rho guanine nucleotide exchange factor 10 like  |
| Database Link:        | <a href="#">Entrez Gene 55160 Human Q9HCE6</a>  |
| Background:           | This gene belongs to the RhoGEF subfamily of RhoGTPases. Members of this subfamily are activated by specific guanine nucleotide exchange factors (GEFs) and are involved in signal transduction. The encoded protein shows cytosolic distribution. Alternative splicing results in multiple transcript variants. [provided by RefSeq, Jun 2016] |
| Synonyms:             | FLJ10521; GRINCHGEF; KIAA1626; OTTHUMP00000002617; RP11-473A10.1  |



[View online »](#)

## Product images:



Western blot analysis of extracts of Rat lung, using ARHGEF10L antibody (TA373660) at 1:1000 dilution. | Secondary antibody: HRP Goat Anti-Rabbit IgG (H+L) at 1:10000 dilution. | Lysates/proteins: 25ug per lane. | Blocking buffer: 3% nonfat dry milk in TBST. | Detection: ECL Basic Kit . | Exposure time: 90s.