

Product datasheet for **TA373652S**

ARHGAP30 Rabbit Polyclonal Antibody

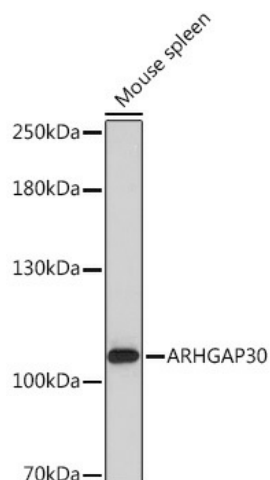
Product data:

Product Type:	Primary Antibodies
Applications:	ELISA, ICC/IF, WB
Recommended Dilution:	WB, 1:500 - 1:2000 IF/ICC, 1:50 - 1:200 ELISA, Recommended starting concentration is 1 µg/mL. Please optimize the concentration based on your specific assay requirements.
Reactivity:	Human, Mouse
Modifications:	Unmodified
Host:	Rabbit
Isotype:	IgG
Clonality:	Polyclonal
Formulation:	Buffer: PBS with 0.02% sodium azide, 50% glycerol, pH 7.3.
Concentration:	lot specific
Purification:	Affinity purification
Conjugation:	Unconjugated
Storage:	Store at -20°C. Avoid freeze / thaw cycles.
Stability:	Shelf life: one year from despatch.
Predicted Protein Size:	119kDa
Gene Name:	Rho GTPase activating protein 30
Database Link:	Entrez Gene 257106 Human Q7Z6I6
Background:	Predicted to enable GTPase activator activity. Predicted to be involved in small GTPase mediated signal transduction. Located in intracellular membrane-bounded organelle.
Synonyms:	FLJ00267; FLJ44128

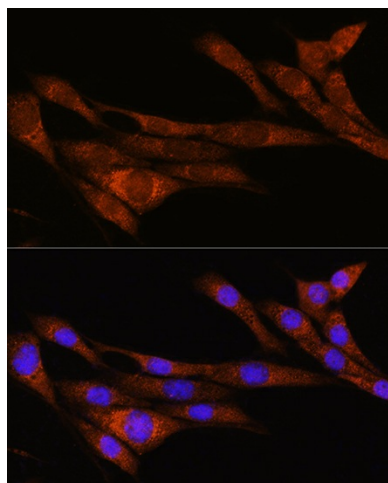


[View online »](#)

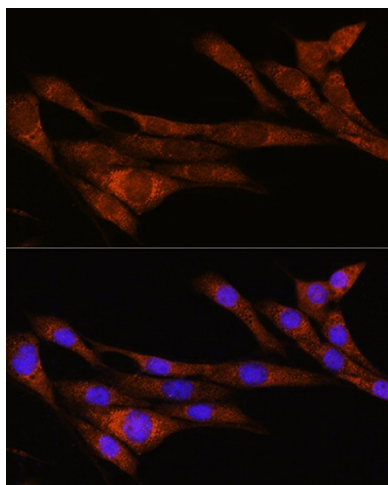
Product images:



Western blot analysis of lysates from Mouse spleen



Immunofluorescence analysis of HeLa cells using ARHGAP30 Rabbit pAb ([TA373652]) at dilution of 1:100. Secondary antibody: Cy3-conjugated Goat anti-Rabbit IgG (H+L) (AS007) at 1:500 dilution. Blue: DAPI for nuclear staining.



Immunofluorescence analysis of NIH/3T3 cells using ARHGAP30 Rabbit pAb ([TA373652]) at dilution of 1:100. Secondary antibody: Cy3-conjugated Goat anti-Rabbit IgG (H+L) (AS007) at 1:500 dilution. Blue: DAPI for nuclear staining.