

Product datasheet for **TA373652**

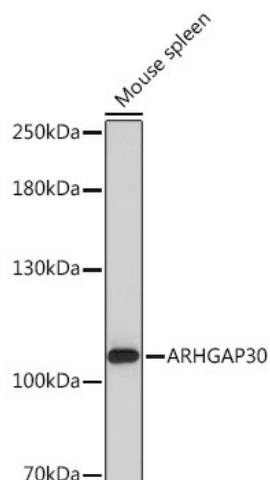
ARHGAP30 Rabbit Polyclonal Antibody

Product data:

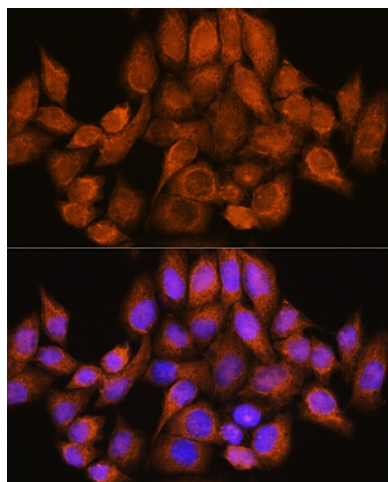
Product Type:	Primary Antibodies
Applications:	ICC/IF, WB
Recommended Dilution:	WB, 1:500 - 1:2000 IF, 1:50 - 1:200
Reactivity:	Human, Mouse
Modifications:	Unmodified
Host:	Rabbit
Isotype:	IgG
Clonality:	Polyclonal
Immunogen:	Recombinant fusion protein containing a sequence corresponding to amino acids 485-585 of human ARHGAP30 (NP_859071.2).
Formulation:	Buffer: PBS with 0.02% sodium azide, 50% glycerol, pH 7.3.
Concentration:	lot specific
Purification:	Affinity purification
Conjugation:	Unconjugated
Storage:	Store at -20°C. Avoid freeze / thaw cycles.
Stability:	Shelf life: one year from despatch.
Gene Name:	Rho GTPase activating protein 30
Database Link:	Entrez Gene 257106 Human Q7Z6I6
Background:	GTPase-activating protein (GAP for RAC1 and RHOA, but not for CDC42).
Synonyms:	FLJ00267; FLJ44128



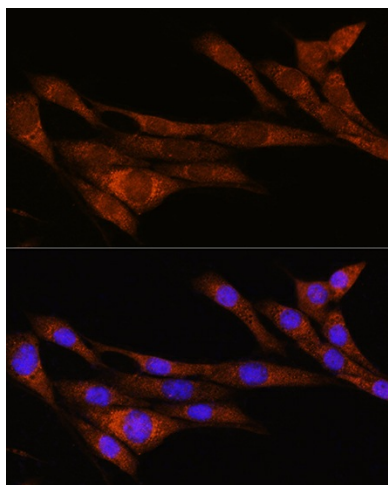
[View online »](#)

Product images:

Western blot analysis of extracts of Mouse spleen, using ARHGAP30 Rabbit pAb (TA373652) at 1:1000 dilution. | Secondary antibody: HRP Goat Anti-Rabbit IgG (H+L) at 1:10000 dilution. | Lysates/proteins: 25ug per lane. | Blocking buffer: 3% nonfat dry milk in TBST. | Detection: ECL Basic Kit . | Exposure time: 90s.



Immunofluorescence analysis of HeLa cells using ARHGAP30 Rabbit pAb (TA373652) at dilution of 1:100. Blue: DAPI for nuclear staining.



Immunofluorescence analysis of NIH/3T3 cells using ARHGAP30 Rabbit pAb (TA373652) at dilution of 1:100. Blue: DAPI for nuclear staining.