

Product datasheet for **TA373648S**

ARHGAP1 Rabbit Polyclonal Antibody

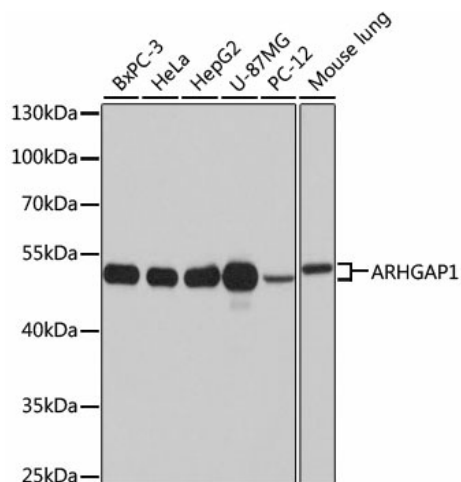
Product data:

Product Type:	Primary Antibodies
Applications:	ELISA, IP, WB
Recommended Dilution:	WB, 1:500 - 1:2000 IP, 0.5µg-4µg antibody for 200µg-400µg extracts of whole cells ELISA, Recommended starting concentration is 1 µg/mL. Please optimize the concentration based on your specific assay requirements.
Reactivity:	Human, Mouse, Rat
Modifications:	Unmodified
Host:	Rabbit
Isotype:	IgG
Clonality:	Polyclonal
Formulation:	Buffer: PBS with 0.02% sodium azide, 50% glycerol, pH 7.3.
Concentration:	lot specific
Purification:	Affinity purification
Conjugation:	Unconjugated
Storage:	Store at -20°C. Avoid freeze / thaw cycles.
Stability:	Shelf life: one year from despatch.
Predicted Protein Size:	50kDa
Gene Name:	Rho GTPase activating protein 1
Database Link:	Entrez Gene 392 Human Q07960
Background:	This gene encodes a member of a large family of proteins that activate Rho-type guanosine triphosphate (GTP) metabolizing enzymes. The encoded protein contains a SRC homology 3 domain and interacts with Bcl-2-associated protein family members.
Synonyms:	Cdc42GAP; p50-RhoGAP; p50rhoGAP; RHOGAP; RHOGAP1



[View online »](#)

Product images:



Western blot analysis of various lysates using ARHGAP1 Rabbit pAb (TA373648) at 1:1000 dilution.

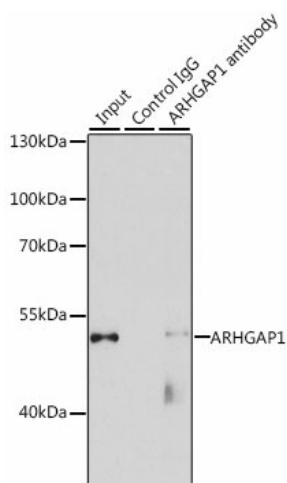
Secondary antibody: HRP-conjugated Goat anti-Rabbit IgG (H+L) (AS014) at 1:10000 dilution.

Lysates/proteins: 25µg per lane.

Blocking buffer: 3% nonfat dry milk in TBST.

Detection: ECL Basic Kit (RM00020).

Exposure time: 15s.



Immunoprecipitation analysis of 200 µg extracts of HeLa cells