

## Product datasheet for **TA373642S**

### **ZNF289 (ARFGAP2) Rabbit Polyclonal Antibody**

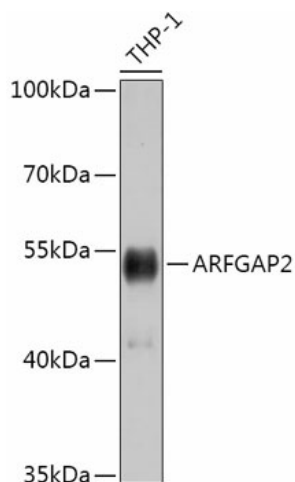
#### **Product data:**

Product Type:	Primary Antibodies
Applications:	ELISA, ICC/IF, WB
Recommended Dilution:	WB, 1:500 - 1:2000 IF/ICC, 1:50 - 1:200 ELISA, Recommended starting concentration is 1 µg/mL. Please optimize the concentration based on your specific assay requirements.
Reactivity:	Human, Mouse, Rat
Modifications:	Unmodified
Host:	Rabbit
Isotype:	IgG
Clonality:	Polyclonal
Formulation:	Buffer: PBS with 0.02% sodium azide, 50% glycerol, pH 7.3.
Concentration:	lot specific
Purification:	Affinity purification
Conjugation:	Unconjugated
Storage:	Store at -20°C. Avoid freeze / thaw cycles.
Stability:	Shelf life: one year from despatch.
Predicted Protein Size:	57kDa
Gene Name:	ADP ribosylation factor GTPase activating protein 2
Database Link:	<a href="#">Entrez Gene 84364 Human</a> <a href="#">Q8N6H7</a>
Background:	Predicted to enable GTPase activator activity. Predicted to be involved in COPI coating of Golgi vesicle. Located in Golgi apparatus; cytosol; and plasma membrane.
Synonyms:	FLJ14576; FLJ26000; IRZ; Nbla10535; Zfp289; ZNF289

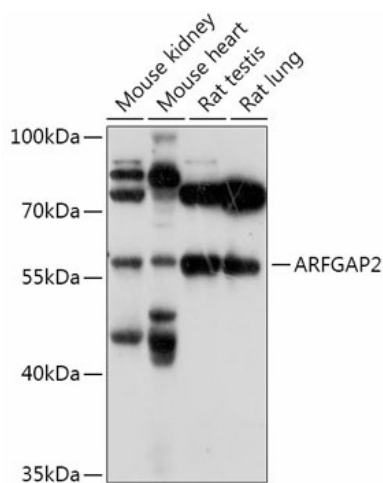


[View online »](#)

## Product images:

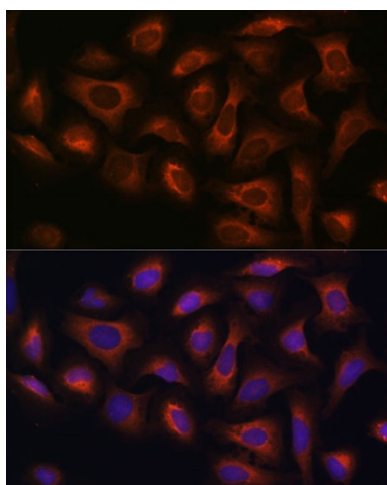


Western blot analysis of lysates from THP-1 cells



Western blot analysis of various lysates using ARFGAP2 Rabbit pAb ([TA373642]) at 1:1000 dilution.

Secondary antibody: HRP-conjugated Goat anti-Rabbit IgG (H+L) (AS014) at 1:10000 dilution.  
Lysates/proteins: 25µg per lane.  
Blocking buffer: 3% nonfat dry milk in TBST.  
Detection: ECL Basic Kit (RM00020).  
Exposure time: 90s.



Immunofluorescence analysis of U-2 OS cells using ARFGAP2 Rabbit pAb ([TA373642]) at dilution of 1:100. Secondary antibody: Cy3-conjugated Goat anti-Rabbit IgG (H+L) (AS007) at 1:500 dilution. Blue: DAPI for nuclear staining.