

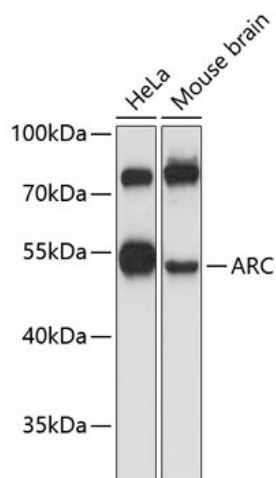
## Product datasheet for **TA373632S**

### Arg 3.1 (ARC) Rabbit Polyclonal Antibody

#### Product data:

Product Type:	Primary Antibodies
Applications:	ELISA, WB
Recommended Dilution:	WB, 1:500 - 1:2000 ELISA, Recommended starting concentration is 1 µg/mL. Please optimize the concentration based on your specific assay requirements.
Reactivity:	Human, Mouse
Modifications:	Unmodified
Host:	Rabbit
Isotype:	IgG
Clonality:	Polyclonal
Formulation:	Buffer: PBS with 0.02% sodium azide, 50% glycerol, pH 7.3.
Concentration:	lot specific
Purification:	Affinity purification
Conjugation:	Unconjugated
Storage:	Store at -20°C. Avoid freeze / thaw cycles.
Stability:	Shelf life: one year from despatch.
Predicted Protein Size:	45kDa
Gene Name:	activity-regulated cytoskeleton-associated protein
Database Link:	<a href="#">Entrez Gene 23237 Human Q7LC44</a>
Background:	Predicted to enable mRNA binding activity. Involved in cell migration; cytoskeleton organization; and regulation of cell morphogenesis. Located in cytoplasm and plasma membrane.
Synonyms:	ARC/ARG3.1; Arg3.1; KIAA0278


[View online »](#)

**Product images:**


Western blot analysis of various lysates using ARC Rabbit pAb ([TA373632]) at 1:3000 dilution. Secondary antibody: HRP-conjugated Goat anti-Rabbit IgG (H+L) (AS014) at 1:10000 dilution. Lysates/proteins: 25µg per lane. Blocking buffer: 3% nonfat dry milk in TBST. Detection: ECL Basic Kit (RM00020). Exposure time: 90s.