

## Product datasheet for **TA373619S**

### Aquaporin 4 (AQP4) Rabbit Polyclonal Antibody

#### Product data:

Product Type:	Primary Antibodies
Applications:	ELISA, ICC/IF, IHC, WB
Recommended Dilution:	WB, 1:100 - 1:500 IHC-P, 1:50 - 1:200 IF/ICC, 1:50 - 1:200 ELISA, Recommended starting concentration is 1 µg/mL. Please optimize the concentration based on your specific assay requirements.
Reactivity:	Human, Mouse, Rat
Modifications:	Unmodified
Host:	Rabbit
Isotype:	IgG
Clonality:	Polyclonal
Formulation:	PBS with 0.05% proclin300, 50% glycerol, pH7.3.
Concentration:	lot specific
Purification:	Affinity purification
Conjugation:	Unconjugated
Storage:	Store at -20°C. Avoid freeze / thaw cycles.
Stability:	Shelf life: one year from despatch.
Predicted Protein Size:	35kDa
Gene Name:	aquaporin 4
Database Link:	<a href="#">Entrez Gene 361 Human P55087</a>



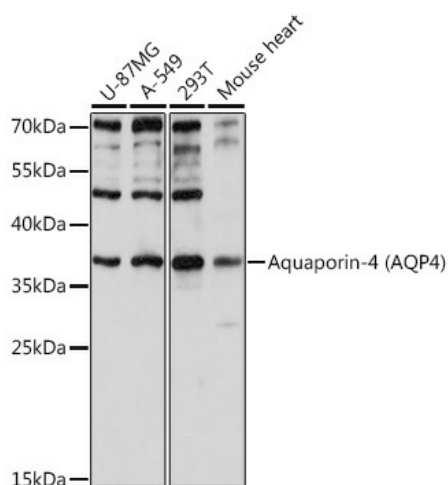
[View online »](#)

**Background:**

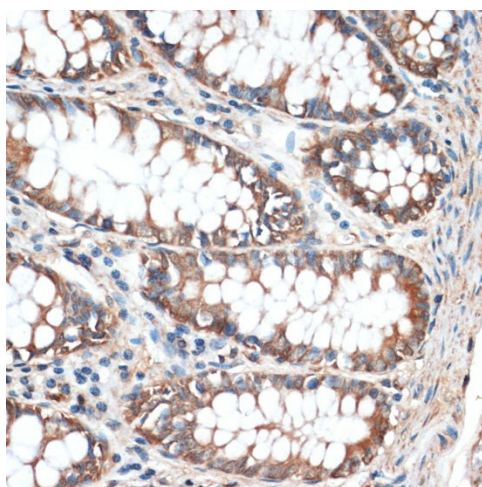
This gene encodes a member of the aquaporin family of intrinsic membrane proteins that function as water-selective channels in the plasma membranes of many cells. This protein is the predominant aquaporin found in brain and has an important role in brain water homeostasis. Alternatively spliced transcript variants encoding different isoforms have been described for this gene. Additional isoforms, resulting from the use of alternative in-frame translation initiation codons, have also been described. Recent studies provided evidence for translational readthrough in this gene, and expression of C-terminally extended isoforms via the use of an alternative in-frame translation termination codon.

**Synonyms:**

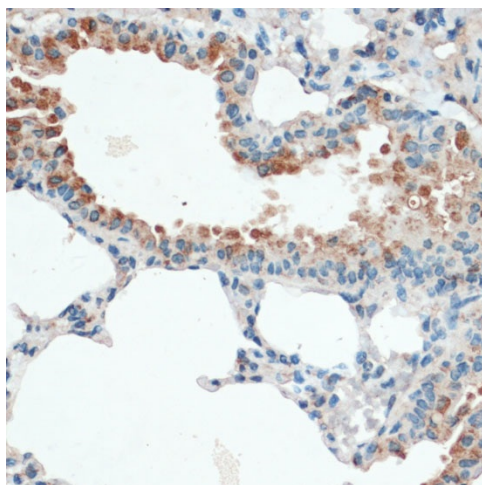
AQP-4; aquaporin-4; HMIWC2; MGC22454; MIWC; WCH4

**Product images:**


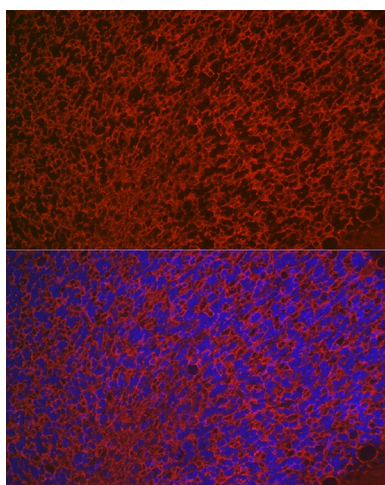
Western blot analysis of lysates from SKOV3 cells



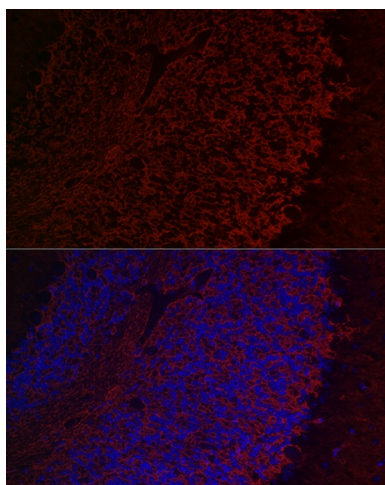
Immunohistochemistry analysis of paraffin-embedded Mouse kidney using Aquaporin-4 (AQP4) Rabbit pAb ([TA373619]) at dilution of 1:100 (40x lens). High pressure antigen retrieval performed with 0.01M Citrate Bufferr (pH 6.0) prior to IHC staining.



Immunohistochemistry analysis of paraffin-embedded Rat brain using Aquaporin-4 (AQP4) Rabbit pAb ([TA373619]) at dilution of 1:100 (40x lens). High pressure antigen retrieval performed with 0.01M Citrate Bufferr (pH 6.0) prior to IHC staining.



Immunofluorescence analysis of paraffin-embedded rat brain using Aquaporin-4 (AQP4) Rabbit pAb ([TA373619]) at dilution of 1:50 (40x lens). Secondary antibody: Cy3-conjugated Goat anti-Rabbit IgG (H+L) (AS007) at 1:500 dilution. Blue: DAPI for nuclear staining.



Immunofluorescence analysis of paraffin-embedded mouse brain using Aquaporin-4 (AQP4) Rabbit pAb ([TA373619]) at dilution of 1:50 (40x lens). Secondary antibody: Cy3-conjugated Goat anti-Rabbit IgG (H+L) (AS007) at 1:500 dilution. Blue: DAPI for nuclear staining.