

Product datasheet for **TA373616**

Aquaporin 2 (AQP2) Rabbit Polyclonal Antibody

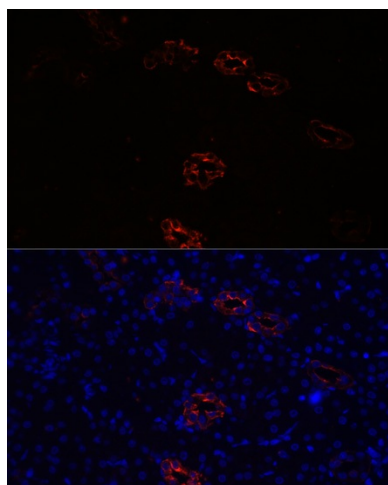
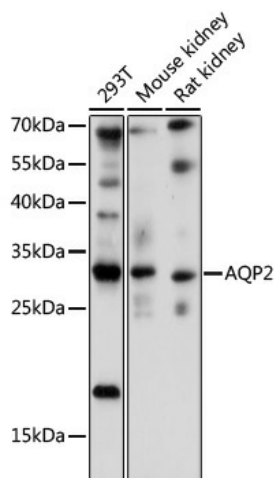
Product data:

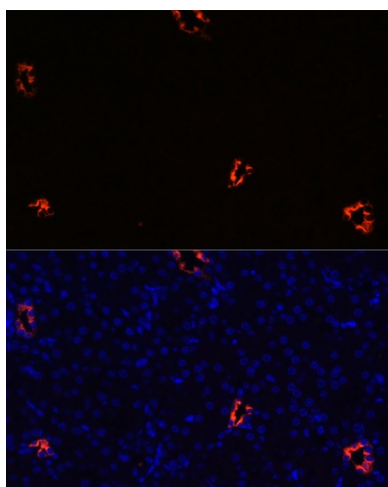
| | |
|-------------------------|---|
| Product Type: | Primary Antibodies |
| Applications: | ICC/IF, IHC, WB |
| Recommended Dilution: | WB,1:500 - 1:2000 IHC,1:50 - 1:100 IF,1:50 - 1:200 |
| Reactivity: | Human, Mouse, Rat |
| Modifications: | Unmodified |
| Host: | Rabbit |
| Isotype: | IgG |
| Clonality: | Polyclonal |
| Immunogen: | Recombinant fusion protein containing a sequence corresponding to amino acids 147-271 of human AQP2 (NP_000477.1). |
| Formulation: | Buffer: PBS with 0.02% sodium azide,50% glycerol,pH7.3. |
| Concentration: | lot specific |
| Purification: | Affinity purification |
| Conjugation: | Unconjugated |
| Storage: | Store at -20°C. Avoid freeze / thaw cycles. |
| Stability: | Shelf life: one year from despatch. |
| Predicted Protein Size: | 28kDa |
| Gene Name: | aquaporin 2 |
| Database Link: | Entrez Gene 359 Human P41181 |
| Background: | This gene encodes a water channel protein located in the kidney collecting tubule. It belongs to the MIP/aquaporin family, some members of which are clustered together on chromosome 12q13. Mutations in this gene have been linked to autosomal dominant and recessive forms of nephrogenic diabetes insipidus. |
| Synonyms: | AQP-2; AQP-CD; aquaporin-CD; MGC34501; WCH-CD |



[View online »](#)

Product images:





Immunofluorescence analysis of mouse kidney cells using AQP2 antibody (TA373616) at dilution of 1:100. Blue: DAPI for nuclear staining.