

Product datasheet for **TA373614**

Aquaporin 1 (AQP1) Rabbit Polyclonal Antibody

Product data:

| | |
|-------------------------|---|
| Product Type: | Primary Antibodies |
| Applications: | ICC/IF, IHC, WB |
| Recommended Dilution: | WB,1:500 - 1:2000 IHC,1:50 - 1:200 IF,1:50 - 1:200 |
| Reactivity: | Human, Mouse, Rat |
| Modifications: | Unmodified |
| Host: | Rabbit |
| Isotype: | IgG |
| Clonality: | Polyclonal |
| Immunogen: | A synthetic peptide corresponding to a sequence within amino acids 200 to the C-terminus of human Aquaporin-1 (Aquaporin-1 (AQP1)) (NP_932766.1). |
| Formulation: | Buffer: PBS with 0.02% sodium azide,50% glycerol,pH7.3. |
| Concentration: | lot specific |
| Purification: | Affinity purification |
| Conjugation: | Unconjugated |
| Storage: | Store at -20°C. Avoid freeze / thaw cycles. |
| Stability: | Shelf life: one year from despatch. |
| Predicted Protein Size: | 16kDa/19kDa/23kDa/28kDa |
| Gene Name: | aquaporin 1 (Colton blood group) |
| Database Link: | Entrez Gene 358 Human P29972 |



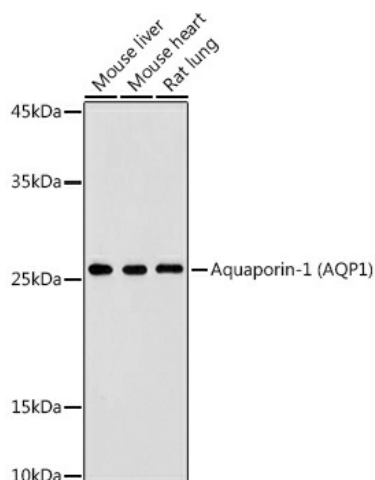
[View online »](#)

Background:

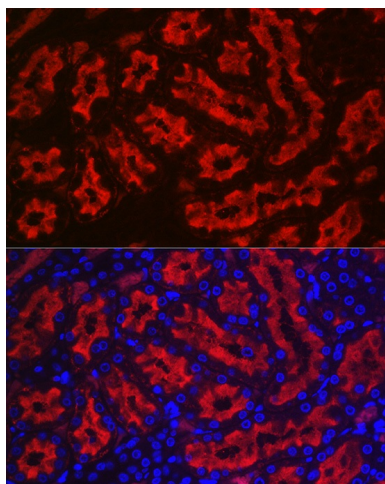
Aquaporins are a family of small integral membrane proteins related to the major intrinsic protein (MIP or AQP0). This gene encodes an aquaporin which functions as a molecular water channel protein. It is a homotetramer with 6 bilayer spanning domains and N-glycosylation sites. The protein physically resembles channel proteins and is abundant in erythrocytes and renal tubes. The gene encoding this aquaporin is a possible candidate for disorders involving imbalance in ocular fluid movement. Several transcript variants encoding different isoforms have been found for this gene.

Synonyms:

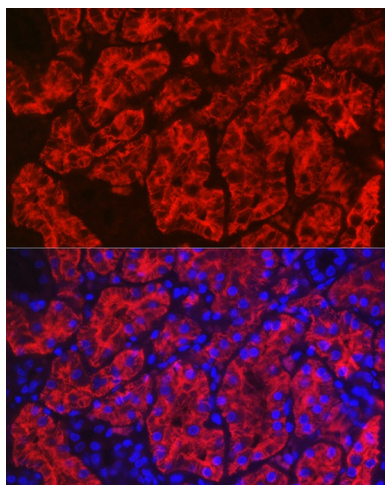
AQP-1; AQP-CHIP; Aquaporin-CHIP; CHIP28; CO; MGC26324

Product images:

Western blot analysis of extracts of various cell lines, using Aquaporin-1 (AQP1) antibody (TA373614) at 1:500 dilution. | Secondary antibody: HRP Goat Anti-Rabbit IgG (H+L) at 1:10000 dilution. | Lysates/proteins: 25ug per lane. | Blocking buffer: 3% nonfat dry milk in TBST. | Detection: ECL Basic Kit. | Exposure time: 180s.



Immunofluorescence analysis of rat kidney using Aquaporin-1 (AQP1) Rabbit pAb (TA373614) at dilution of 1:100 (40x lens). Blue: DAPI for nuclear staining.



Immunofluorescence analysis of human kidney using Aquaporin-1 (AQP1) Rabbit pAb (TA373614) at dilution of 1:100 (40x lens). Blue: DAPI for nuclear staining.